

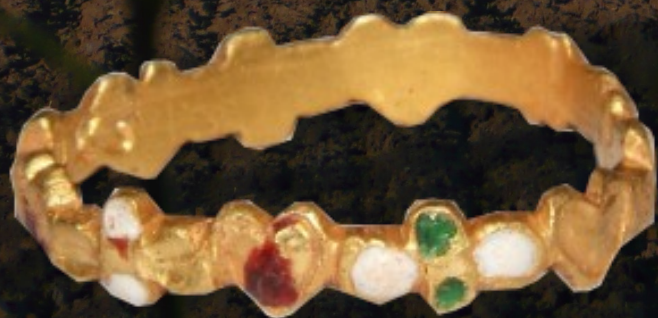
UKDN WORD

WORLD OF RESPONSIBLE DETECTING

ISSUE NO.79
March 2014



**INSIDE -
ALL THE
COMPETITION
WINNERS
FROM EVERY
MONTH !!**



inside:

NEWS, VIEWS, COMPETITION RESULTS AND MORE

UKDN Word Table of Contents

Click on the title to go to the page

Regulars

3 - A Message From Admin

8 - Did You See

19 - Latest Farm News

34 - News And Views

35 - Useful Weblinks

36 - New Members

Competition Results

9 - Coin of the month

11 - Artefact of the month

15 - DSLR Photo Competition

17 - PP&P Photo Competition

facebook | join our group +

Features

20 - All the monthly competition winners from last year and photos of the winning Coin and Artefact.



UKDN would like to thank Tom Redmayne for the cover page image, DetectingDavid for image enhancement and UKDN members for their input.



The Admin Team

The Admin Team



Brian & Mo'

Founded UKDN in
Sept 2002, Detecting
since 1978.

Kevmar

Here since Sept 2002.
Detecting since 1978.



Coreservers

Word Assistant Editor.
Here since 2003,
Detecting since 2003

Kev Woodward

Here since 2005.
Detecting since 1990.



Tomredmayne

Here since Sept 2006,
Detecting since 2005



Puffin

Here since Nov 2007,
Detecting since 2007

Junior Admin



Tinner

Here since 2006
Detecting since 2001



Baldric

Here since 2004
Detecting since 2003



Meandmydreams

Here since 2007
Detecting since 2002



Hi Everyone

Welcome to this our 79th issue of Word magazine.

This past month has seen amazing coins and finds appear on the forum. We've had Roman gold along with a Bronze Age bead (found eyes only by the way) as well as other very interesting finds. Our members are certainly getting out despite the wet weather, keep up the excellent effort.

After all the recent floods water levels in most parts of the country are starting to fall. It may not look like it but the soil is warming up and starting to dry out. Many farmers are now getting on and cultivating for spring crops such as beans, and fields that have been stubble all winter are being ploughed and those that were left as rough plough are being cultivated down. Standing crops are starting to grow away a bit now too so those who can detect on them may see them get too long to go on quite quickly.

There are still many farmers who lost crops due to the wet weather though and there will be opportunities to detect as these are ploughed or disced back in and re-sown.

A great many club digs have been cancelled due to the wet weather. In the main they have been stopped because vehicles could not be taken on the land for fear of being bogged down so despite the fact that some of our members have been out detecting and have found some amazing finds there are legions of them who haven't been out detecting for some months.

However with Spring just around the corner we hope that most of you will be able to get out on some land and start making some finds.

Don't forget that our monthly Coin and Artefact of the Month competitions now have a prize to each winner i.e. a free copy of Treasure Hunting sent straight to your door.

Good Hunting to you all from The Team

Donating to UK DETECTOR NET

Recently a few new members said they wanted to donate towards our forum and wanted to know how they could, saying that it wasn't easy to find the donate button. Well, it's on the Portal Page, in the middle, about half-way down :-). Below is a brief introduction of what our donations do and how they affect your ranking within UKDN.

For the past six years UKDN has had a ranking system to show how frequently and often a member has supported the site by making a donation. We have gone through a rising scale e.g. bronze, silver, gold, platinum and diamond. Earlier this year we introduced a final ranking of "UKDN Valued Supporter". Any member who is already a Diamond Supporter will reach this milestone when they next donate. Further donations will not raise the ranking beyond Valued Supporter.

When you join UKDN you are automatically made a 'registered member'. If you make a donation either via the link at the bottom of this page or via the portal page you will become a "UKDN Supporter". Make another donation and you move through the rankings starting next with "UKDN Supporter Bronze" until you reach Valued Supporter.



Donations do not give you access to secret or special areas of UKDN, we do not have them. Everyone sees the same thing apart from Admin and other Team members who have areas where forum matters can be discussed. If you do not donate then you see the same as people who donate. Brian & Mo', the Forum Founders stated when UK DETECTOR NET was formed that there will never be "pay to see" areas within UKDN. Some members like to donate because they want to put something back into this forum because they get so much out of it. All donations are recorded in Admin and all monies are spent on the forum.

To Donate click the button below - you will see the donate link down the left hand side of the page.



HOW MUCH DO YOU KNOW ABOUT OVARIAN CANCER?

March is Ovarian Cancer Awareness Month

Whatever question you want to ask,
the Macmillan team is here to help –
call our free Macmillan Support Line on
0808 808 0000 or visit macmillan.org.uk

**WE ARE
MACMILLAN.
CANCER SUPPORT**

ARCHAEOLOGY-TYPE FINDS BAGS EXCELLENT



Made of strong, durable 200 gauge polythene with grip-seal openings and with three write-on panels.

Supplied in a three useful sizes to suit all occasions i.e. 1.5" x 2.5 inch for coins and very small finds, 2.5" x 3 inch for larger coins and artefacts and 4" x 5.5 inch for the larger finds.

Sold in batches of multiples of 100 e.g. 300 or 600 or just 100, 500 and 1,000.

All sold at very competitive prices

with no rip-off fees for postage. For more info and to order go to the UKDN Shop via the link on the below.

100 small bags - £2.90 INC. postage

500 small bags - £9.20 inc. postage

1000 small bags - £13.99 inc. postage

100 medium bags - £3.20 inc. postage

500 medium bags - £9.90 inc. postage

1000 medium bags - £15.50 inc. postage

100 large bags - £4.99 inc. postage

500 large bags - £14.50 inc. postage

1000 large bags - £23.00 inc. postage

[Link to UKDN Shop](#)



Did you See

With almost 500 members visiting every single day and 100's of new posts every day it is so easy for you, the members of UKDN, to miss out on some very interesting posts. So, each month in the magazine we will bring to your attention some posts that you might have missed like.....click on the link

Can you get coins this small?	Could any one help me find my Drone Please !
13th/14th Century Harness Pendant	50p Kew coin could be worth £20
'Mythical Roman cave' unearthed	Free Crown Estates Permit icon
Silver Token	Roman GOLD
Savage Family Diggers	Bronze Age Gold Bead
Made a new friend today!	Saxon Hoard
Lost Change	I don't understand chucking in hedges?
Illegal detecting ,what to do about it?	Which detector is best for...
Photo Effects Software - Just got it free	Facebook page
Local museums and historic sites.	5 hammered day!!

Coin of The Month

Winner - Dino-UK Iceni Boar type Unit



I found the Iceni silver unit on a new permission. The Iron age era has always been my favourite and having detected since the early 70's I have been able to find a few Celtic sites over the years.

This new permission was a result of research using Google Earth and a network of local farmers I was at school with.

The field however was still left with oil seed rape stubble and very difficult to detect, so having found the unit, I eagerly await this springs ploughing when hopefully I'll be able to find more Iron Age coins and artefacts.

(c) Gerry (Dino - UK)

(Continued on page 10)



(Continued from page 9)

Incidentally the photo of myself was taken in September in South Africa during one of my trips metal detecting the Anglo Boer campsites and battlefields in the Karoo and Kwa Zulu Natal.

Artefact of the Month

Winner—Kopparberg Roman Sealbox—Complete and Unopened



The day in question, Sunday 5th Jan, was my weekend to work so I finished by 10.00 and had to go back at 1.00pm so with it being a lovely day as I recall I thought with the wifes permission I would go out for a couple of hours and be ready for going back to work .

I was without my normal detecting buddy Yeti as we only tend to do full days out together and some weekends he cannot even get away for a few hours.

I picked a small pasture field that I had a go at in the summer months with not much success apart from a few Georgian copper coins so I wasn't really expecting much at all.

Using my weapon of choice my trusty Etrac with the Detech Ultimate 13 inch coil my first signal was a nice buckle with some gilding on it. I thought at the time if this is all I get then its better than what I have had off this ground before.

(Continued on page 12)

Artefact of the Month

(Continued from page 11)

I followed this up with a decimal 50 pence piece, then a shoe buckle fragment and some well worn copper coins - so worn you could not tell who or what from them.

Next up came a Charles 1st rose farthing and part of a crotal bell, then out popped the Roman seal box from about 6 inches down. What a little stunner this was with a lot of the enamel intact and complete.

It also looks like it hasn't been opened, which I am not sure I would want to risk as I could break the hinge opening it.

It won me Club Find of the Month and is now with the F.L.O being recorded through the P.A.S which is one thing I do with all of my finds. After finding the seal box time had run out so it was back to work for a few hours then back home to admire the seal box.

(C) Kopparberg February 2014



Treasure hunting

BRITAIN'S BEST SELLING
METAL DETECTING MAGAZINE

Monthly Competitions Runners up Coins



***XP Pete --
Commonwealth
Half Groat***

***Scotsmaninkent --
Charles 1st
Early Milled***



***Ustwo - George 1st
Irish Halfpenny***



***Tinner -
Trajan Denarius***



Monthly Competitions Runners up Artefacts



***Coreservers -- Buckle
with integral plate***



***Classicarschippy --
Urnes style mount***



***popsandme -
- Roman bell***



***Monkeybean --
16th C silver ring***



***Tinner -- Roman
plate brooch***

UKDN FUN DSLR - Camera PHOTOGRAPHIC COMPETITION

**Winner - Chris Hall - Keere Street,
Lewes, East Sussex**

**Olympus OMD EMI with
M.Zuiko 12-40mm Pro lens (HDR image)**



Runners Up Featured Overleaf

UKDN FUN DSLR - Camera PHOTOGRAPHIC COMPETITION



**Coenwolf
Nuthatch posing
nicely ,canon 1Dmkiii
and 400mm f5.6 lens**

**Warwick Wolf
Robin taking in the
sunshine..!
Sony A57 DSLT.. Sigma
150-500mm**



**Popsandme
Garden spider with
lunch.
Canon 600d 18-55mm
lens with extension**



**Slapeddicus

Jan 1st happy new
year.....**



UKDN FUN POINT, PRESS & PRAY PHOTOGRAPHIC COMPETITION

Winner - Tom Redmayne
Melting cobweb. Taken with a
Panasonic TZ3, 21/1/14.



UKDN FUN POINT, PRESS & PRAY PHOTOGRAPHIC COMPETITION

Runner-up

Coenwolf - The Secret Valleys secret.

Canon SX30hs





**SUBSCRIBE TODAY
FOR £114 AND SAVE 20%**

In this week's issue:
**>> SCHMALLENBERG HITS HARD
IN ADULT ANIMALS
PLUS CAP reform update**



NFU Conference 2014: Major rethink needed on flooding policy, says Kendall

[Phillip Case 25th February 2014](#)

A major rethink is needed on how government money is used to prevent farmland from flooding in the future, says NFU president Peter Kendall.....

NFU Conference 2014 video: Extreme changes faced by farmers

[Philip Case 25th February 2014](#)

Extreme weather, pernicious weeds and volatile yields are among the biggest challenges faced by farmers, say delegates at the [NFU conference 2014](#).....

Flooded fields mean anxious wait for growers

[David Jones 18th February 2014](#)

Flooded arable growers face an agonising time to see if their under water crops survive or they will be forced to redrill with spring crops once dry weather returns.....

Flood water may pose health danger to animals say vets

[Jonathan Riley 25th February 2014](#)

Vets have warned livestock farmers in flood-stricken areas to be aware of the health dangers posed by receding flood waters. While farmers will be relieved to see flood waters starting to subside in some areas, the risk of contamination by sewage, chemicals and other waste is very real.....

Spring bean crops a good option due to strong markets

[Richard Allison 18th February 2014](#)

Strong export markets, coupled with new varieties offering a real step up in yield, could see a spring bean resurgence in the coming years, starting this season.....

Ploughing your way out of a black grass pickle

[Adam Clarke 17th February 2014](#)

In one form or another the plough has been a mainstay in crop production for thousands of years, but in recent decades it has gone in and out of fashion. At present it is very much "in", with German plough manufacture Lemken reporting a 50% increase in sales last year as growers introduce the plough back into their crop rotations.....

UK soil crisis hitting crop yields, warns expert

[Richard Allison 10th February 2014](#)

British soils are reaching crisis point and it isn't being helped by the shortage of soil scientists, says Shane Ward, the first director of the Soil and Water Management Centre. He outlines how the centre can help reverse this.....

Crime Register

[Search for crime in your area](#)

Police

[Local Crime Map](#)



Coin and Artefact of the year Competition Results **THE WINNERS ARE.....**



***Detectorman68
Edward the
Confessor Penny***



***Dirty Harry
Enamelled Gold Ring***

Find of the Month Competition Winners **January**

Monkeybean - Edward III Quarter Noble



***Godfrey -
Spur fragment - 1550 to 1700***



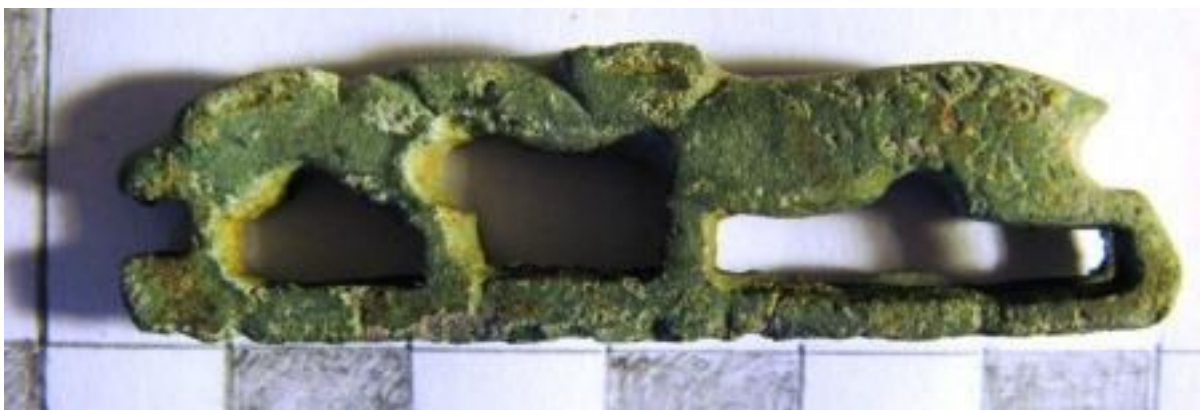
Find of the Month Competition Winners

February

Morayhunter - Mary penny of Scotland, one of the scarcest billon coins minted and one of the smallest at 14mm, minted in 1544 when Mary was just 6 years old



Tinner - Roman folding knife handle



Find of the Month Competition Winners

March

***Ironage - Dobunni Corio Quarter
Stater only the 17th recorded***



***Flipperbrownsnout -
Enamelled ring, Romano British?***



Find of the Month Competition Winners

April

***Detectorman68 -
Coin of Edward the confessor Lincoln mint
moneyer Ulf 1042 to 1044 Found 28/04/2013***



Nickb - Anglo Saxon saucer brooch



Find of the Month Competition Winners

May

***Coreservers -
Edward 1st Dublin penny***



***Kopparberg -
10th century Saxon lead brooch***



Find of the Month Competition Winners

June

***Tinner -
William and Mary half-penny 1694***



***Tinnersdad -
Saxon Artefact***



Find of the Month Competition Winners

July

***Ironage - Gallo-Belgic "geometric Type"
Uninscribed Quarter Stater 65 B.C. oak tree
by a stream and 3 men in a boat.***



***Flipperbrownsnout -
Winged palstave Bronze Age axe
1700 - 1500BC***



Find of the Month Competition Winners

August

*DetectingDavid -
Commonwealth Half Groat*



*DirtyHarry -
Enamelled Gold Posy ring consisting of heart and tre-
foil/flower design possibly dating 16th-17th C
Inscription reads "My ♥ is onely yours"*



Find of the Month Competition Winners

September

***Tinner -
William 11 penny***



***Jammeygit -
Roman zoomorphic 2nd century
animal brooch billy goat***



Find of the Month Competition Winners

October

***Sylverskin22 -
Edward 1st Irish penny.***



***Midhurst -
Saxon Short long brooch, late 5th/early 6thC***



Find of the Month Competition Winners

November

Tom Redmayne - Henry I penny, Quatrefoil with Piles type, BMC VII, Moneyer ÆLFWINE and Hereford mint. A previously unrecorded moneyer for Henry I, Hereford mint, type VII and only the second Hereford coin found for Henry I type VII.



***Nickb -
Silver seal matrix***

Find of the Month Competition Winners

December

*Paulsamfeya -
Charles I Tower mint shilling*



*ScotsmaninKent -
Medieval personal seal matrix
circa 12th Century.*





HERITAGE CRIME

What are heritage crimes?

Heritage crimes are, first of all, offences that damage the historic environment – so things like vandalism, graffiti, arson and theft.

Why should the public care about heritage crimes?

Heritage crimes are criminal activities, which can have serious effect on neighbourhoods and society.

Things like arson, graffiti, and criminal damage scar beautiful buildings. Anti-social behaviour such as substance misuse debase the places we live and enjoy visiting; theft and illegal metal detecting take away the physical evidence valuable to our understanding of the past. On top of that, all of these can incur financial loss on property owners.

If heritage crimes are not tackled better we all stand to lose something of our history and well-being.

How serious are these crimes?

There is **no national statistics on heritage crime** by the police so the true extent is difficult to ascertain. Through our work in the regions and our experience with many sites across the country, we know the crimes are widespread and they tend to be under-reported by victims.

A recent assessment identified that arson, architectural theft, removal of artifacts from protected sites and vehicle nuisance pose the greatest threat.

Illegal metal detecting in Lincolnshire is growing and reported cases are only the tip of the iceberg.

The level of **metal theft** is also of great concern.

- In 2005, there were 84 metal theft claims from churches totalling £325,326. In 2010, this has soared to 1763 claims costing £3,310,488 (data from Ecclesiastical)
- In 2010 Manchester diocese tops the list of metal theft claims with more than 90 claims recorded up to the end of November. It is closely followed by Lincoln, with more than 70 claims

Our understanding of the volume and extent of crime in the historic environment continues to develop. Neighbourhood Policing and local involvement will contribute considerably to gathering intelligence and data on the ground. We will also be developing systems that will allow us to accurately record crimes and ASB and thereby place our resources in the right place at the right time.

For crimes in progress - call 999

More action, less crime. It all adds up.

For crimes that have happened - report to your local Police
[click here for the non emergency reporting number](#)

LINCOLNSHIRE POLICE

[Click here to take part in the English Heritage Crime Survey](#)

policing with PRIDE

News and Views from February 2014

Rare Viking brooch found near Sleaford

Remains of king Alfred or his son found?

Discovery of a maiden crown in Roskilde Cathedral

Rabbits unearth Stone Age treasure

Mysterious code in Viking runes is cracked

Collection of Roman Gold Coins Realises \$1,700,000

Dartmoor tomb treasure hoard uncovered

Ancient treasure found in Hampshire

The Twynholm Hoard

Metal detector man praised for 500 finds

Ayrshire hunters find Twynholm silver hoard

The Silverdale Hoard Exhibition comes to Preston

Ship's wheel uncovered in Swansea Bay after storms

Useful Weblinks
<i>PAS - getting involved</i>
<i>PAS - Upcoming Events</i>
<i>PAS - self recording</i>
<i>PAS -Recording Timeline</i>
<i>PAS - Advice for finders of archaeological objects including treasure</i>
<i>PAS - Conservation advice notes</i>
<i>PAS - Guidance to landowners, occupiers & tenant farmers in England & Wales</i>
<i>PAS - News from the scheme</i>
<i>PAS - Blogs</i>
<i>Responsible detecting code of practice</i>
<i>Frome hoard time lapse video of excavation</i>
<i>Press coverage of the Frome hoard discovery</i>
<i>Burnham hoard excavation</i>
<i>Staffordshire hoard excavation</i>
<i>Staffordshire hoard at the BM</i>
<i>Definition of Treasure</i>
<i>To Report Nighthawking - If in progress ring 999, if after the event click here & enter post code, the phone number for your local Police Station is shown on the bottom right hand side</i>
<i>Rallies & Events - Searcher Magazine</i>
<i>Rallies & Events - Treasure Hunting Magazine</i>
<i>Wheresthepath - For O/S & Aerial Maps & National Grid References</i>
<i>Post code finder</i>
<i>Getting involved in archaeology</i>

New members in February 2014

Brian and Mo and the team would like to thank and extend a warm welcome to all the new members listed below who have joined UKDN in the last month. Please introduce yourselves so that the members can welcome you aboard and make you feel at home. [Click here to introduce yourself](#)

If you are not already registered with UKDN you can register by clicking on this link and see what you are missing [Click here to register](#)

andyspud1	darkdestroyer 64
graham dyer	skinters
Boston+	searching
nightowel17	rodlyn
roman soldier	matt1200uk
oldfossil	coldfield1966
dave67	kevt hunter
Claybusterboy	Topmark6
Wendaloid	barton9329
Barryboy86	Farmer don
kred	Lifesaver
boxwood	Hazel2011
andy77	the_lord_of_the_ring
Scumdigger	eigg50
Davey	mike1984
SteveGolding	reno
anyoldiron	Chrome
Elliott	Rob48
Euther86	Wayward Lark
biglad	MattyP
wet feet again	mwoc
48mel48	Venturer
neverwntd2dance	Trevor J
richierichb71	RoyRay
Rumshop pen	wingnutt
chris rushton	martyn7
scottforsythe	skint eastwood
ronleake	messagevoice
Andy2490	musicdaz73
ubique25	cjrsparky

About us

UK DETECTOR NET was created on September 28th 2002 to bring together responsible metal detectorists everywhere to discuss the hobby, their finds, the machines they use and a million and one other detecting related subjects.

Visit the forum

[Click here to visit forum](#)

Contact UKDN

enquiry@ukdetectornet.co.uk

UKDN magazines to download

[Download magazines here](#)

View online

[View our Magazines online here](#)

If you would like to contribute to the newsletter please contact either UKDN as above or PhilD via PM,.

UKDN aims

UKDN is a forum for people who are interested in the hobby of metal detecting. UKDN is an online community where members can exchange and share knowledge, their views, discuss the hobby, their finds, the machines they use and a million and one other detecting related subjects. UKDN actively works towards the following aims:

1. Develop a greater understanding of the hobby and some of the wider issues through healthy pro-active debate within the forum and through the monthly magazine, which is distributed to, and read by, our membership and beyond. The magazine includes UKDN based news and articles, as well as wider news, debate, and issues of heritage interest.
2. Provide a platform to inform beginners in the hobby of the basic principles in the use of a metal detector, gaining permission, site research, basic heritage law, farming scheme rules and in the 'best practice' for conservation, recording and co-operation.
3. Actively promotes the 'Code of Practice for Responsible Metal Detecting' to all members of the UKDN online forum and beyond.
4. Encourage all UKDN detectorists to record their finds with the appropriate bodies (depending where they detect); In England and Wales, this is with the Portable Antiquities Scheme, in Scotland this is the Treasure Trove Unit.
5. UKDN will actively work towards ensuring the future security of the hobby. We will liaise and co-operate with heritage professionals in a way which is mutually beneficial to all parties whilst maintaining our independence, and we encourage their active participation, either in the UKDN online community or through our on-line magazine.