

# UKDN WORD

WORLD OF RESPONSIBLE DETECTING

Issue no: 134  
October 2018



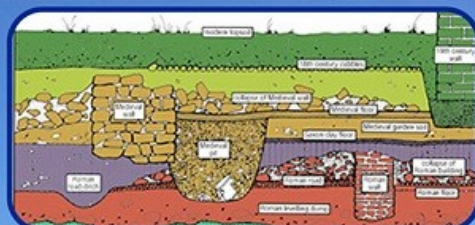
Photo Comp Winners



Dragonesque  
Feature



Deus Winner



Stratigraphy Feature



Inside...News, Views, Articles, Reports and more



# ***UKDN Word Table of Contents***

*Click on the title to go to the page*

## ***Regulars***

***4 - Welcome Message***

***7 - Did You See***

***21 - News And Views***

***23 - Latest Farm News***

***24 - Local Heroes***

***31 - Useful Websites***

***32 - New Members***

## ***Competition Results***

***19 - DSLR Photo Competition***

## ***Features***

***8 - Dragonesque Brooches by  
Kev Woodward***



***16 - Stratigraphy & Context  
By PhilD***



UKDN would like to thank Jimmytheferret for the front cover image,  
DetectingDavid for image enhancement and UKDN members for their input.

# admin team

## Brian & Mo'

Founded UKDN in Sept 2002  
Detecting since 1978



## Coreservers

Word Assistant Editor  
Here since 2003  
Detecting since 2003



## Kev Woodward

Here since 2005  
Detecting since 1990



## Popsandme

Here since 2009  
Detecting since 2009



## Moderators



### Chasm\_norwich

Here since 2014  
Detecting since 1985



### Baldric

Here since 2004  
Detecting since 2003



### Hectorsfarm

Here since 2012  
Detecting since 2011



### Firthy77

Here since 2006  
Detecting since 1970



### Dendro\_Tom

Here since 2014  
Detecting since 1985





.....To this the 134th Issue of Word magazine, dated October 2018.

What a month it's been. Forum numbers are still creeping up slowly, and we made our very healthy donation of £760 to Macmillan Cancer Support.

We finished our Summer Draw at the end of September. Long-standing member Eric Elliston, 'Threee' on the UKDN forum, won the top prize of the Deus metal detector. Other winners were Lobo, The-Roman, Lincs Jon, Ellie 77, Ridgeyman, Donnydave, Hawkeye, PT Detector and Jellytussle. A photo of Threee with his detector prize is featured on the next page. Our thanks go to everyone who took part for supporting our major charity fund-raising event. A picture of the cheque presentation will be featured in a later page of this issue of Word magazine.

Talking about magazines..... We made a plea in one of our bulk emails recently asking for more people to help us put our Word together. To date we have had no offers of help so, unfortunately, it is distinctly possible that this magazine could go out of existence as early as the beginning of next year.

The forum is doing well, with plenty of lively activity again, now that the detecting months are upon us. Some fabulous finds are being made and our very talented Finds Advisors are making some amazing ID's. These guys never cease to amaze me with their accuracy, even on the most grotty or obscure of finds.

My base club, The South-Lancs & Cheshire MDC, has just passed its 40th birthday. It was originally started by me way back in 1978.....and what a great club it has become. I'm proud to say it was a pioneering club, the members of which were involved in the setting up of the NW Federation of Metal Detecting Clubs and, later, the NCMD. One of our members was also heavily involved in the framing and wording of the Treasure Act 1996, and the introduction of the Portable Antiquities Scheme (PAS) in 1997, without both of which our hobby would no longer be in existence.

There'll be other clubs that have recently become, or are already, of a similar vintage. It's an idea, I think, to ask you guys to post up details of your club onto the forum just to let everyone else know about its existence and its history, members and finds. When I get the time, next week, I'll get around to posting a piece about the South-Lancs and its meeting dates etc. With your permission, and submissions, we might be able to print profiles of your clubs in future editions of Word magazine.

As I type this, the sun is beaming through the windows and it's looking like the next four or five days are going to be really nice and pleasantly warm. Doesn't that make for great detecting? Let's hope this lovely weather continues for several weeks.

I repeat the plea I made on the forum a week or so ago, and ask that we all post more on the forum and make it an even more interesting place.....especially for newcomers to the hobby and this site. As previously stated, more and more people are returning to UKDN and I want to ensure that they have a great experience. If you get out and are lucky enough to make an interesting coin or artefact find then please post it on the forum for us all to see and admire.

# Threee wins XP Deus in UKDN Summer Draw

The UKDN Summer Deus Prize Draw was a resounding success as has been reported elsewhere in this magazine. Eric Elliston, username Threee, was the lucky winner of the first prize, an XP Deus Full. Eric is a long-established member of UKDN having been a member since March 2003, over 15 years.

Eric, seen below with his prize, has told us how chuffed he is to have won such a brilliant prize. Eric would also like to thank UKDN for holding these draws for such a good cause and would also like to thank Regton for drawing the tickets and for such a prompt and speedy service.

Myself and Mo' would also like to thank Nigel Ingram from Regton for offering us the Deus at a much reduced price. We'd also like to thank everyone else involved in helping us hold a very successful draw.





**WE  
THINK  
YOU'RE  
AMAZING**

**WE ARE  
MACMILLAN.  
CANCER SUPPORT**

## **A huge THANK YOU**

To Brian, Mo and everyone at UK DETECTOR NET who took part in the Summer metal detector draw, we wanted to say thank you! You have raised an incredible £760 for Macmillan Cancer Support!

Thank you for helping to make a difference to the lives of people affected by cancer.



# Did you See

With almost 500 members visiting every single day and 100's of new posts every day it is so easy for you, the members of UKDN, to miss out on some very interesting posts. So, each month in the magazine we will bring to your attention some posts that you might have missed like.....click on the link

<b><i>Short Cross Penny</i></b>	<b><i>Small nibbled hammered for ID please.</i></b>
<b><i>Hammered penny..</i></b>	<b><i>Looks zoomorphic to me.</i></b>
<b><i>Another good day.</i></b>	<b><i>Roman coin for ID please</i></b>
<b><i>Equinox</i></b>	<b><i>Hammy for ID please</i></b>
<b><i>Recent finds round up</i></b>	<b><i>Hammy help</i></b>
<b><i>OMG</i></b>	<b><i>Barnmouth Beach</i></b>
<b><i>Any ideas on this?</i></b>	<b><i>Found at the weekend</i></b>
<b><i>X35 Coil</i></b>	<b><i>How did it get here?</i></b>
<b><i>Three roman for ID</i></b>	<b><i>Charles I coin for info please</i></b>
<b><i>2 Buttons.</i></b>	<b><i>Roman coin for emperors name please</i></b>

# Dragonesque Brooches

## By Kev Woodward

This month the identification feature is for the beautiful Dragonesque brooch. Several of these are posted up on UKDN each year for identification, usually because they are damaged and fragmentary. An undamaged and intact enamelled example is a true master piece to behold in both design and workmanship as can be seen from the examples shown. Due to this triumph of design many archaeologists and scholars have spent many a long hour trying to accurately date and form a chronological order for them. Some success has been made and a suggested development is shown below. As can be seen the type started off as a simple and crudely executed 'S' shape and progressed into an elaborate piece of jewellery.

The Dragonesque brooch is always of the classic 'S' shape design with a 'head' and a 'tail' or two 'heads' at the extremities. The main body evolved into an area decorated with a variety of enamelled cells reflecting the craftsman's skill. A central roundel is also often shown, and can be plain or enamelled. Unfortunately most of the examples found by detectorists are little more than the remains of the in body but it is still a joy to find. A recent archaeological appraisal of the known examples from excavations, along with those recorded by detectorists, has concluded that the dating of these brooches to be 75-175AD.

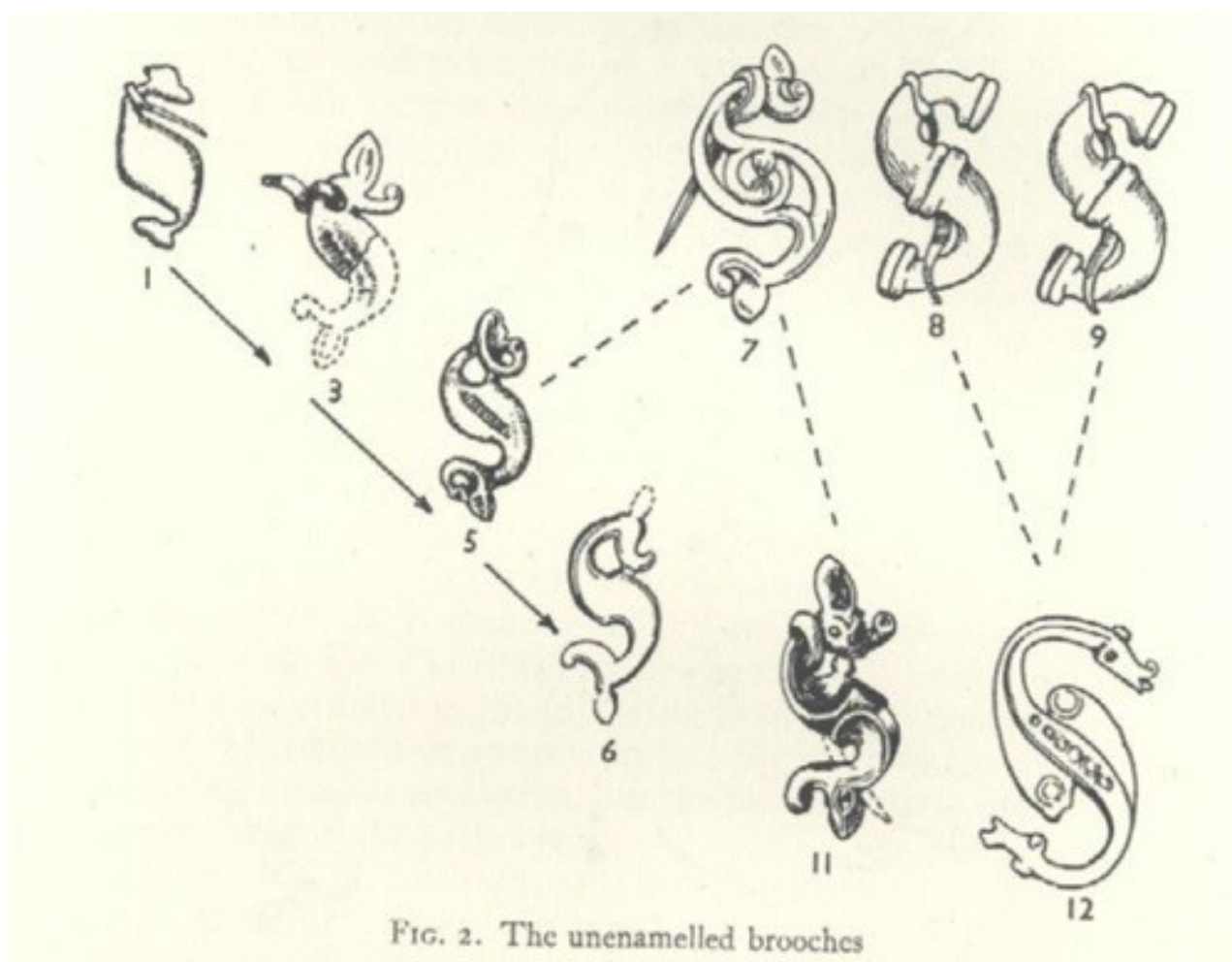


*(Continued on page 9)*



*(Continued from page 8)*

The design is definitely a 'British' one utilising both native and Roman influences. Very few of these brooches are found outside of England and the vast majority (around 80%) are from North Lincolnshire and East Yorkshire. Without doubt they were made and worn in these areas, the others found in England and elsewhere probably being casual losses made by Lincolnshire/Yorkshire travellers. As their area surrounds the Humber and Witham rivers it is not surprising that most of the 'stray' finds are along the east coast of England which would have been easily accessed from the sea via the Humber and Witham.

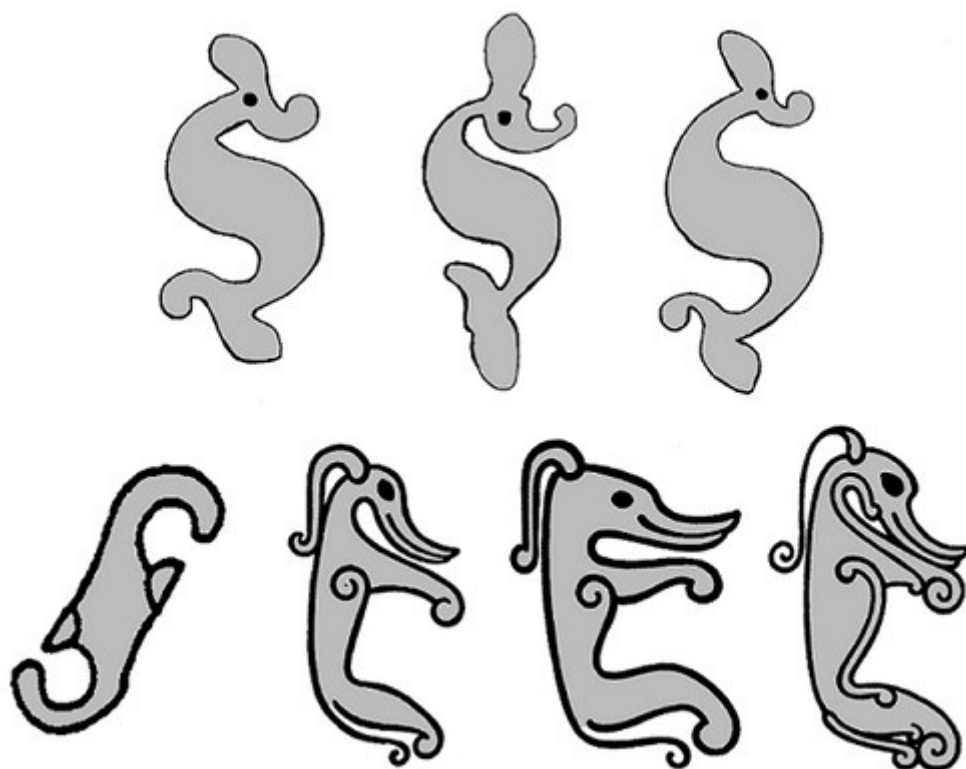


Does the fact that they are mainly found in one geographical area give supporting evidence to the growing theory that native 'British' culture was not completely engulfed and changed by the Romans? There is also some support for the Scottish Pictish beasts (6<sup>th</sup> to 11<sup>th</sup> centuries) carved on stones found in Scotland being based on the Dragon-esque design.

*(Continued on page 10)*

*(Continued from page 9)*

Food for thought and recording your finds will expand the available data for further studies in the future. Follow this link to see items already recorded by detectorists with the PAS <http://finds.org.uk/database/search/results/objecttype/BROOCH/description/dragonesque/material/7/page/1>



Scottish Pictish beasts of 6<sup>th</sup> – 11<sup>th</sup> centuries compared to Dragonesque brooches.

(Picture from [www.heroicage.org](http://www.heroicage.org) )

The pins are always curved and a lot thicker and more robust than other Roman brooches and were made that way so they could hold a heavier cloth. This cloth would have needed a loose weave to avoid damage through continued brooch use with such a heavy pin. It is interesting to speculate what type of garment these brooches were used to fasten. Another unusual aspect of a Dragonesque brooch is that they are unlikely to have been worn in pairs like other types of brooches. It is a rare find indeed if the 'S' shape is reversed, indicating that only one brooch was ever used to fasten the garment.

*(Continued on page 11)*



*(Continued from page 10)*

Also I have not been able to find any examples of these brooches with a chain attached (unless readers know of any?) which supports this single use theory.

The 'S' shaped fastener has been with us for many centuries and continues through to the present day as the humble snake buckles found by detectorists indicate. The 'S' shape, two heads and central roundel are all still there; I have included a picture of one I found a few years ago that has been dated to the Georgian period, the similarities are plain to see. I remember having a snake belt buckle like it when I was a boy in the sixties and seventies and I am sure there are still some around. The military were also fond of the design and one example is shown from the First World War. I hope that you agree they are a classic British design that has endured for nearly two thousand years, be proud of it when you find one.

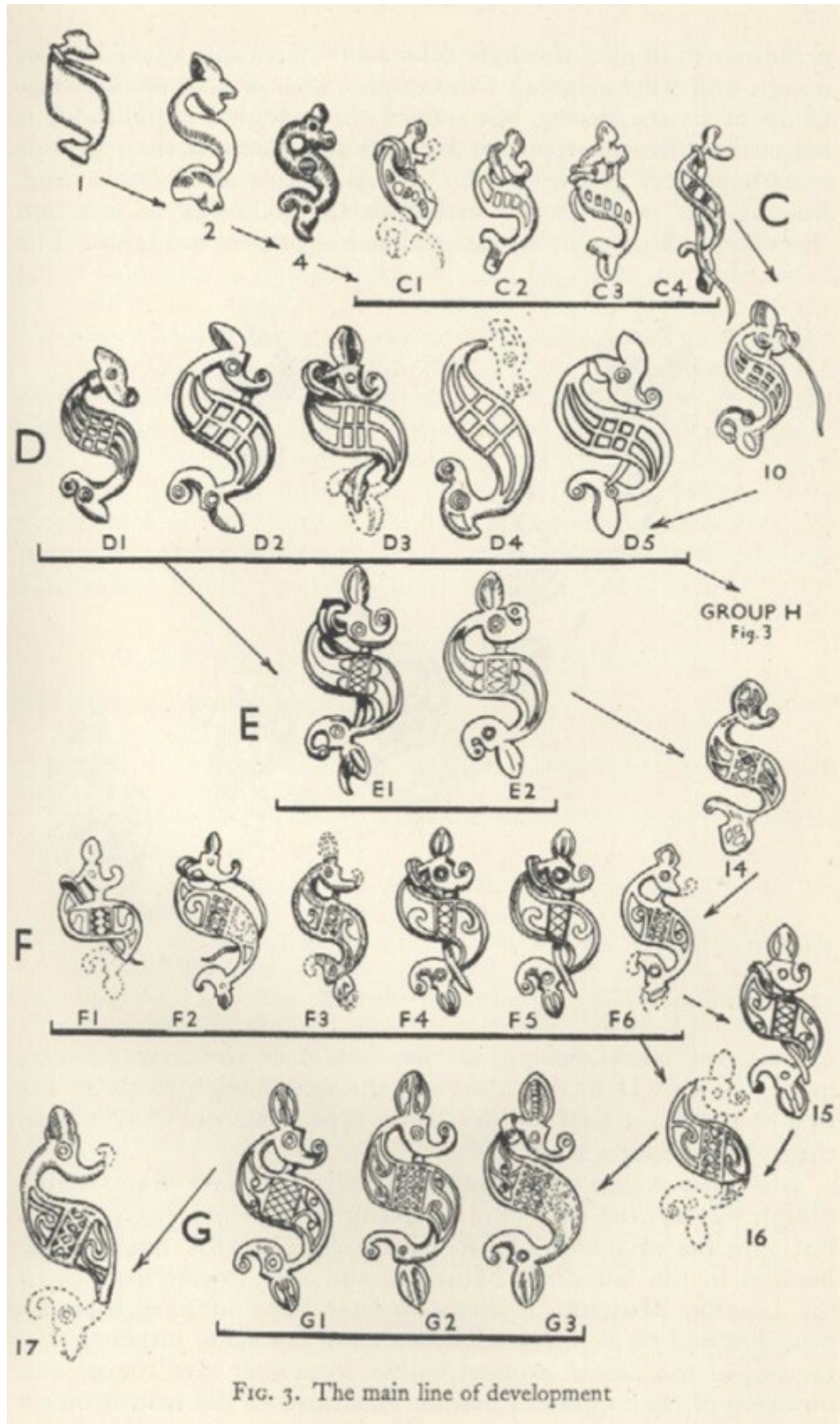
Happy hunting,

Kev Woodward



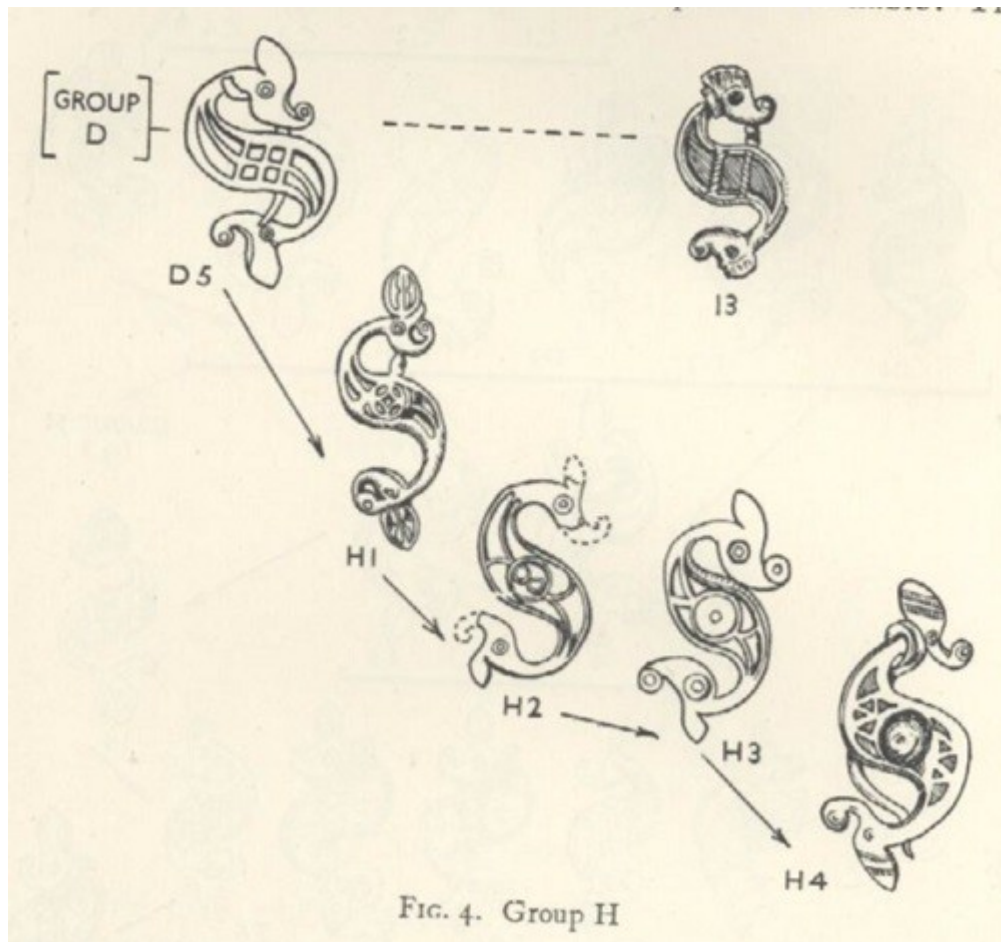
Georgian belt hook (Copyright Kev Woodward)

*(Continued on page 12)*



The main line of development of the Dragonesque brooch





Left:  
First World War snake  
buckle  
(Copyright Barry Carpenter)



All Images on this page are from PAS



***As promised here are the photos from the cheque presentation. Photo shows myself, Megan Kong from Macmillan and the cheque itself.***



**The CO-OPERATIVE BANK** www.co-operativebank.co.uk 08-92-99  
Customer led, ethically guided P.O. Box 250,  
Delf House, Southway,  
Skelmersdale WN8 6WT

Pay Macmillan Cancer Care only Date 26/9/2018

The sum of SEVEN HUNDRED and SIXTY Account Payee

POUNDS ONLY £ 760 - 00p.

This cheque contains 33% recycled paper.

UK DETECTOR NET FORUM-  
UK DETECTOR NET

B. Jones



# STRATIGRAPHY & CONTENT

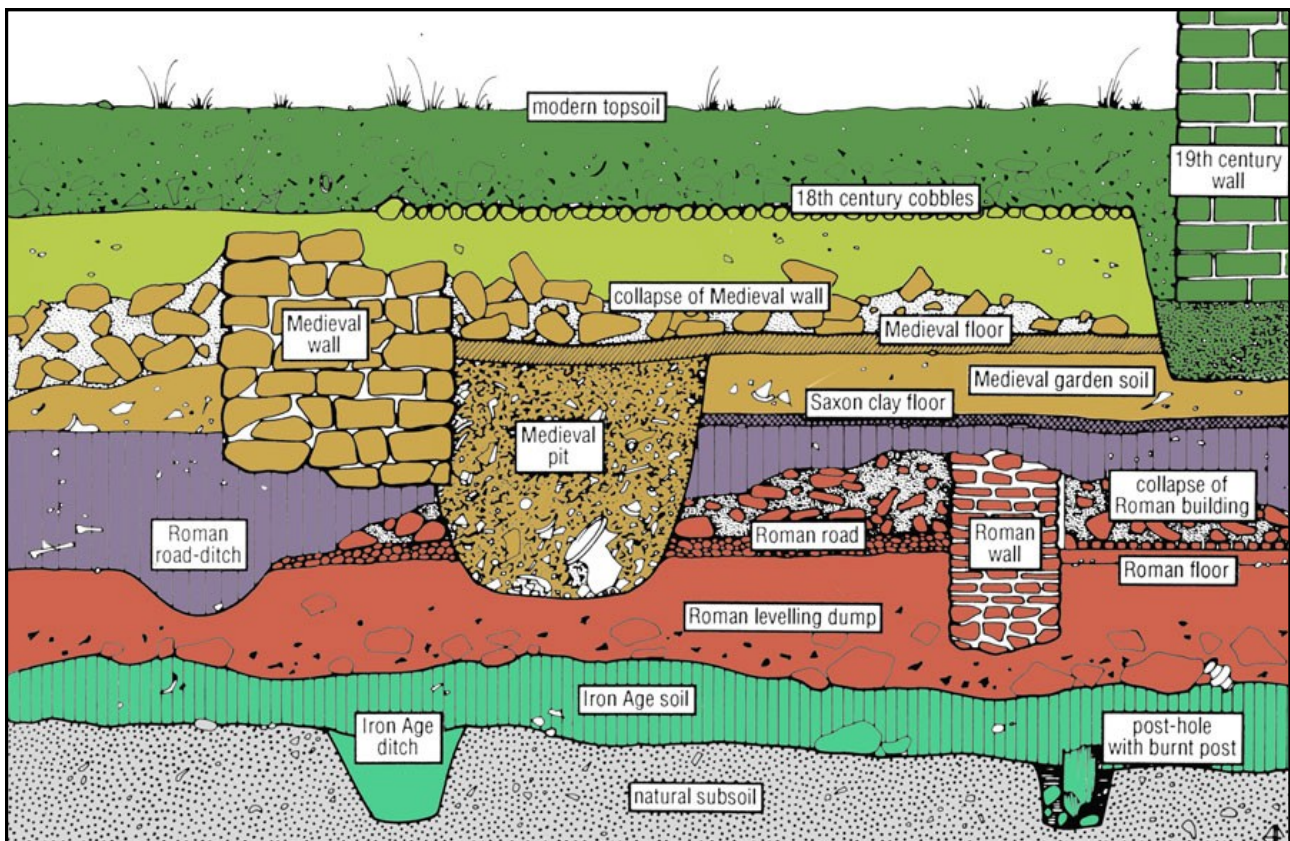


Image Stratigraphy Copyright Canterbury Archaeological Trust

## Stratigraphy

The above image reproduced with the kind permission of Canterbury Archaeological trust hypothetically illustrates the relationship between archaeological features and the passing of time.

Generally speaking the older features lie in chronological order beneath the younger features, the oldest at the bottom and the youngest at the top. The exception being holes that have been dug for pits, ditches, post holes, walls etc, cutting into and sometimes right through the feature beneath.

For further info see [What is stratigraphy](#) & [The process of archaeology](#)

I have taken the liberty to show the chronological relationship of the features by adding hyperlinks to the diagram which will show the time period as the cursor is hovered above it. Clicking on the text shown will give additional information about that feature or the particular layer that the feature is found in including typical metal detecting finds recorded by the [Portable Antiquities Scheme](#)

(Continued on page 17)



## Context

Context recorded by detectorists is as important as that recorded by archaeologists, albeit limited to the surface layers mostly disturbed at some time by the plough.

Older finds might lie above younger finds! and the original location of the find might remain unknown and be many metres away from where it was originally lost or buried!

But just the recording of the find and the find spot alone can tell us so much about our past see the [UKDN WORD article \(page 26\)](#)

Should the find be in relatively undisturbed land, the find spot can tell us even more. This is particularly important if the find is significant, as it's context becomes paramount, as it is with a single treasure find, a hoard of treasure or an important non treasure find such as the Crosby Garrett Helmet.

**So please stop digging when you hit the unploughed level or before if you think you may have found something archaeologically significant & at all times follow the [Code of Practice for Responsible Metal Detecting in England & Wales](#). Or the [Treasure Trove system](#) Scotland.**

This is the point where the recovery of the find should be done by professionals ie by contacting the [Portable Antiquities Scheme Finds Liaison Officer](#) who will arrange for the find to be carefully excavated in such a way that **all** the information it can reveal can be gleaned from it, it's surroundings and associated objects, whilst protecting the find from damage and ensuring that it is conserved in a proper manner.

By doing so, more information of how the find ties in with the context of the past can be revealed, recorded and studied for the benefit of future generations.

**Archaeologists will seek information & answers to questions such as;**

What is the compaction, colour & composition of the soil?

Are there any inclusions ie pottery, tile, bone, leather, metallic or organic material?

(Continued on page 18)

*(Continued from page 17)*

Archaeologists might prefer to remove the find intact with it's surrounding block of earth so that it can be excavated in laboratory conditions to both preserve the find & any information that may surround it in the earth.

Is there timber or masonry nearby or a metallic or non metallic container?

Was anything else buried or lost with it? Could the item(s) be grave goods?

What order were the items buried in? & what is the chronology for the activity of the find spot?

What are the relationships or associations between artefacts, features & other forms of evidence (critical for interpreting archaeological remains)?

Has the find flagged up any associated archaeological features?

Photographs may be taken to compliment the site record.

See also [Context in archaeology](#) & [Context is everything](#) & [Context recording sheet](#)

I would like to thank PAS & the providers of the above web links for the very useful information that they provide & to Canterbury Archaeological Trust for allowing me to use the image showing stratigraphy.

---

## **An Interesting Fact**

**The Great Debasement** (1544-1551) was a currency debasement policy introduced by in 1544 England under the order of Henry VIII which saw the amount of precious metal in gold and silver coins reduced and in some cases replaced entirely with cheaper base metals such as copper. Overspending by Henry VIII to pay for his lavish lifestyle and to fund foreign wars with France and Scotland are cited as reasons for the policy's introduction. The main aim of the policy was to increase revenue for the Crown at the cost of taxpayers through savings in currency production with less bullion being required to mint new coins. During debasement gold standards dropped from the previous standard of 23 carat to as low as 20 carat while silver was reduced from 92.5% sterling silver to just 25%. Revoked in 1551 by Edward VI the policy's economic effects continued for many years until 1560 when all debased currency was removed from circulation. © Wikipedia



## **UKDN FUN DSLR - Camera PHOTOGRAPHIC COMPETITION**

### **Winner - Restyler "As Easy as 123"**

**Canon 80D / 28-300mm**

**Taken at Loton Park Hillclimb - Album here**

**>> <https://flic.kr/s/aHsmpYkQC7>**



**There were no other entries in the DSLR Photo competition.**

**There were no entries at all for the P P & P Photo section. Please enter this coming month or lose it !!**

# **ARCHAEOLOGY-TYPE FINDS BAGS EXCELLENT**



*Made of strong, durable 200 gauge polythene with grip-seal openings and with three write-on panels.*

*Supplied in a three useful sizes to suit all occasions i.e. 1.5" x 2.5 inch for coins and very small finds, 2.5" x 3 inch for larger coins and artefacts and 4" x 5.5 inch for the larger finds.*

*Sold in batches of multiples of 100 e.g. 300 or 600 or just 100, 500 and 1,000.*

*All sold at very competitive prices*

*with no rip-off fees for postage. For more info and to order go to the UKDN Shop via the link on the below.*

*100 small bags - £2.90 INC. postage*

*500 small bags - £9.20 inc. postage*

*1000 small bags - £13.99 inc. postage*

*100 medium bags - £3.20 inc. postage*

*500 medium bags - £9.90 inc. postage*

*1000 medium bags - £15.50 inc. postage*

*100 large bags - £4.99 inc. postage*

*500 large bags - £14.50 inc. postage*

*1000 large bags - £23.00 inc. postage*

**[Link to UKDN Shop](#)**



# ***News and Views from September 2018***

***Likely birthplace of Henry VII found***

***Hoard from river Tees declared Treasure***

***Roman gold coins discovered in Italian theatre***

***Roman finds from Chester HQ dig***

***What did Neolithic people drink at feasts?***

***Digging prehistory on Dartmoor***

***Roman fountain destroyed***

***Medieval glass discovery in Canterbury Cathedral***

***After the Moorland Fires***

***Orkney's oldest bowl unearthed?***

***Bronze Age cairn damaged by vandals***

***Hidden door at Culzean castle***

***Robin Birley passes away***

***10,000 year-old spear found on historic Co Down***



Operation Chronos is a National Operation tackling Unlawful Metal Detecting .

You can contact Operation Chronos via the following:

Pc 677 Andy Long, UK co-ordinator  
chronos@essex.pnn.police.uk  
Tel: **07890 513899**

Your local Police Heritage Crime Officer on **101**



Scan this QR code with a smart phone to visit the Operation Chronos webpages.



## Nighthawking Unlawful Metal Detecting A land owner's guide



### What is Nighthawking?

Nighthawking is a term used in the United Kingdom to describe illegal metal detecting on farmland, archaeological sites and other areas of archaeological interest, usually in order to steal coins and other artefacts for their historical and financial value. Nighthawking refers to the fact that such illegal activity is often undertaken at night to avoid detection and arrest. Although this is deceiving as it also occurs during the day. It can occur anywhere in the country, but counties such as Yorkshire, Essex, Kent, Lincolnshire, Norfolk, Cambridgeshire and Suffolk are particularly vulnerable due to the rich heritage and large amounts of arable land that exist in these areas.

### What should you do if you find Night Hawks on your land?

Whether day or night, if you find Nighthawkers on your land call the Police on 999, as there is a crime in progress. Do not approach them as this would scare them off or they may become aggressive towards you. Gather information by taking registration numbers of vehicles and descriptions of those involved and pass these details to the Police immediately.

[Crime in your area](#)  
[click on Crime Map](#)





## Agriculture key industry for defence, says ex-Defra Secretary Hilary Benn

News 25 Sep 2018 10:55

Former Defra Secretary Hilary Benn has said he is convinced agriculture should be considered a key industry for defence, in the same way as steel.

arable, Beef, Brexit, Business, dairy, livestock, Pig, Politics, poultry, Scotland, sheep



## Labour Party promises to amend Ag Bill to reflect importance of food

News 25 Sep 2018 09:30

A Shadow Defra Minister has promised the Labour Party will amend the Agriculture Bill to ensure the importance of food production is reflected.

arable, Beef, Brexit, Business, dairy, Legislation, livestock, Pig, Politics, poultry, sheep



## Farmers need to think carefully before ditching sugar beet

News 24 Sep 2018 10:10

Given the low 2019 price for sugar beet, many farmers may be considering dropping the crop altogether. Robin Limb investigates growers' options for the years ahead.

Advice, arable, Business



## Global Ag View: Brexit opens door for exports to Argentina

News 24 Sep 2018 04:00

British agri-tech companies could benefit from opportunities in Argentina post-Brexit as the industry looks to harness innovations in data handling.

arable, Business, farm life, livestock



## 'Eco-friendly farming most environmentally damaging'

News 23 Sep 2018 06:00

New research has shown intensive agriculture which uses less land may also produce fewer pollutants, cause less soil loss and consume less water.

arable, farm life, livestock





Detectorists are seen by the public as portrayed in the media, dare I say as the good, the bad and the ugly, ie;

- Those who are recovering our history for the benefit of future generations by following [the code of practice for responsible metal detecting in England and Wales](#) agreed by all parties including the NCMD, the NFU and English Heritage, by helping in the community and recording their finds.

And by reporting all finds as [Treasure Trove in Scotland](#).

- Those who are depriving future generations of our history by not following the code of practice and not recording their finds even though [recording is mandatory in the countryside stewardship landowners agreement](#).

- Those who are thieves who use detectors to steal from farmland and Scheduled monuments.

This new section of the magazine is to promote good practice and is dedicated to the ambassadors of the hobby of whom we are so proud. Their deeds have

## [CODE OF PRACTICE FOR RESPONSIBLE METAL DETECTING UPDATED](#)

## [FINDS LIAISON OFFICERS NEAR YOU](#)

## [INTERVIEW WITH MICHAEL LEWIS](#)





*Click on the names for more information*



## Ways we can help the PAS

PAS funding has been reduced leading to fewer FLO's and so the PAS is looking for better ways to manage their work load as they are working at full capacity;

<https://finds.org.uk/getinvolved/guides/pressures>

They are taking on volunteer recorders;

<https://finds.org.uk/getinvolved/volunteering/role/id/12>

And are promoting self recording;

<https://finds.org.uk/counties/leicestershire/tag/british-museum/>

I would welcome any suggestions on how we can help PAS and the hobby get through this period of austerity.

My thoughts are that we can all help by having information available when recording, the more help we can give the PAS the better I.e. By;

**1.** Have a National Grid Reference of your find spot ready when you see the FLO, this saves getting a map out and finding the NGR. If you can give a 10 figure reference using a GPS it would be much appreciated;

[http://www.amazon.co.uk/s/ref=nb\\_sb\\_noss\\_1/276-8734508-8923167?url=search-alias%3Daps&field-keywords=garmin+etrex&rh=i%3Aaps%2Ck%3Agarmin+etrex](http://www.amazon.co.uk/s/ref=nb_sb_noss_1/276-8734508-8923167?url=search-alias%3Daps&field-keywords=garmin+etrex&rh=i%3Aaps%2Ck%3Agarmin+etrex)

Or download the Grid Reference App to your Android phone (set it for 10 figs); [https://play.google.com/store/apps/details?id=net.blerg&hl=en\\_GB](https://play.google.com/store/apps/details?id=net.blerg&hl=en_GB)

Or use the Grid Reference Finder website;

<http://www.gridreferencefinder.com/>

**2.** If you can fill in the details of your find on a "Finds recording sheet" in advance this will save precious PAS time. Basic info; <http://atoz.forumukdetectornet.co.uk/PAS%20find%20recording%20labels.doc>

More info; <http://atoz.forumukdetectornet.co.uk/PAS%20finds%20recording%20sheet.pdf>

**3.** Better still if you are willing to purchase a set of jewelers scales;

[http://www.amazon.co.uk/s/ref=nb\\_sb\\_ss\\_i\\_4\\_8?url=search-alias%3Daps&field-keywords=jewelers+scales&srefix=jewelers%2Caps%2C188&rh=i%3Aaps%2Ck%3Ajewelers+scales](http://www.amazon.co.uk/s/ref=nb_sb_ss_i_4_8?url=search-alias%3Daps&field-keywords=jewelers+scales&srefix=jewelers%2Caps%2C188&rh=i%3Aaps%2Ck%3Ajewelers+scales)

And a digital caliper;

[http://www.amazon.co.uk/?ie=UTF8&keywords=caliper+measure&tag=googhydr-21&index=aps&hvadid=48450325458&hvpos=1t1&hvexid=&hvnetw=g&hvrandid=5959077009827215455&hvpone=&hvptwo=&hvmmt=b&hvdev=c&ref=pd\\_sl\\_9rw416xiuq\\_b](http://www.amazon.co.uk/?ie=UTF8&keywords=caliper+measure&tag=googhydr-21&index=aps&hvadid=48450325458&hvpos=1t1&hvexid=&hvnetw=g&hvrandid=5959077009827215455&hvpone=&hvptwo=&hvmmt=b&hvdev=c&ref=pd_sl_9rw416xiuq_b)

The weights and dimensions of the finds would be much appreciated saving even more time.



4. Or you can go the whole hog and self record, this requires you to undertake an initial meeting with your FLO to assess your level of ability and then up to 5 training sessions with PAS to ensure you are competent to do this as you would need to take quality images of the finds and ID them accurately as per others on the PAS database and enter them correctly, although not all sessions are necessary if you can demonstrate that you are able to self record to the PAS standard. Your FLO is only an email or phone call away to help and guide you if you are unsure of a particular aspect of self recording.

Volunteers guide to recording objects;

<https://finds.org.uk/volunteerrecording>

Flow of objects;

<https://finds.org.uk/documents/guide.pdf#page=7>

Please feel free to share this information to assist the PAS and strengthen our hobby.

Flickr link for PAS images;

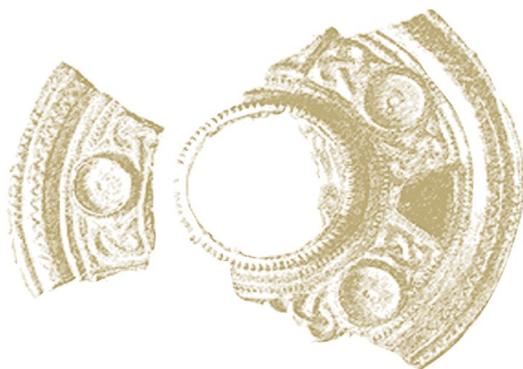
<https://www.flickr.com/photos/finds/albums>

Local Heroes theme song;

<https://www.youtube.com/watch?v=5maW-BTJ2LE>

Find my FLO

<http://rjw57.github.io/findmyflo/>



[Register](#)

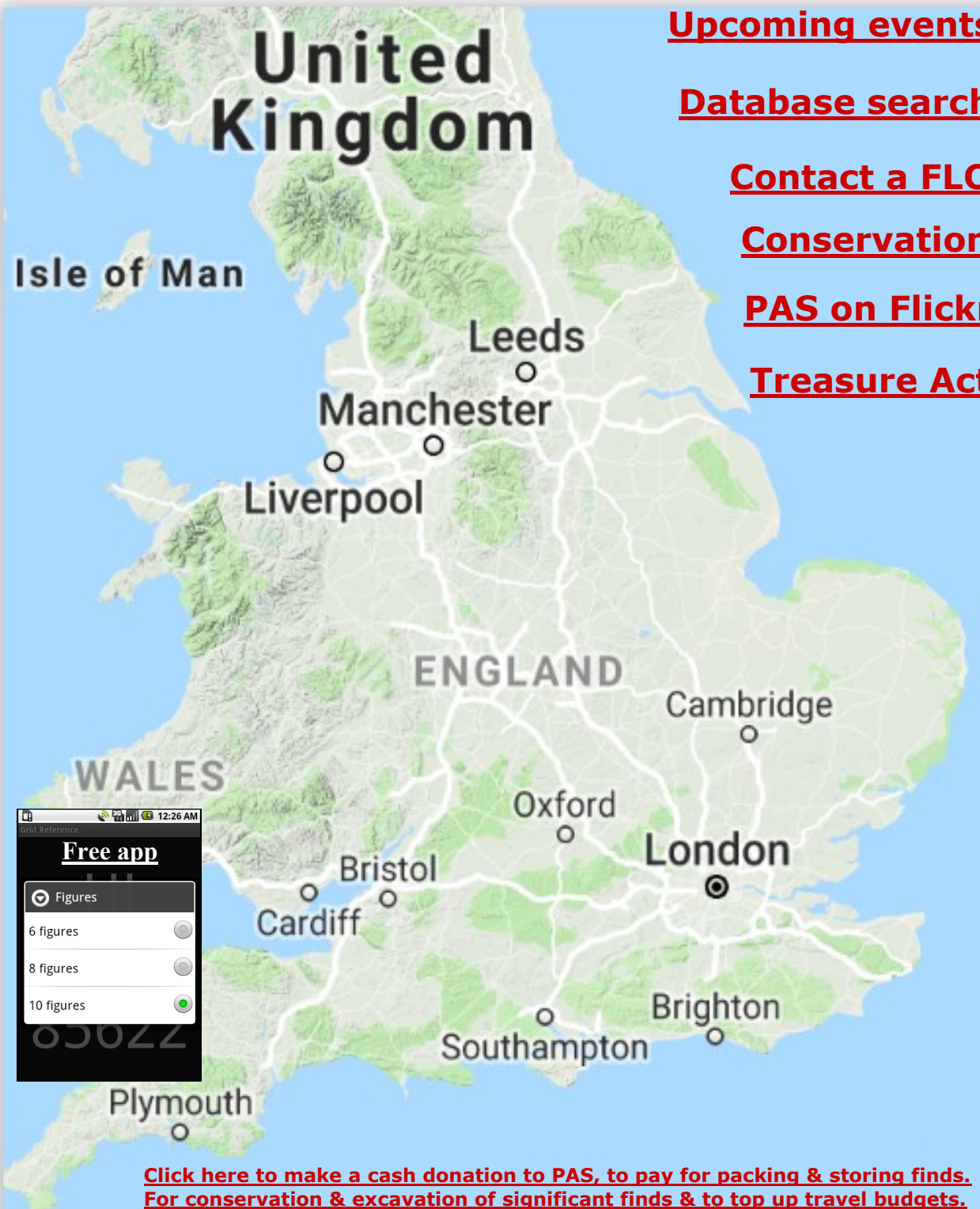
[Search the database](#)

# Portable Antiquities Scheme

[www.finds.org.uk](http://www.finds.org.uk)

# PAS Upcoming Events

## Click on text



The image features a map of the United Kingdom with labels for 'United Kingdom', 'Isle of Man', 'Leeds', 'Manchester', 'Liverpool', 'ENGLAND', 'WALES', 'Cambridge', 'Oxford', 'London', 'Bristol', 'Cardiff', 'Southampton', 'Brighton', and 'Plymouth'. Overlaid on the bottom left is a mobile app interface titled 'Free app' with a 'Grid Reference' field and a time display of '12:26 AM'. Below this is a 'Figures' section with three radio button options: '6 figures', '8 figures', and '10 figures', with '10 figures' being selected. To the right of the map, there is a list of links: [Upcoming events](#), [Database search](#), [Contact a FLO](#), [Conservation](#), [PAS on Flickr](#), and [Treasure Act](#). At the bottom of the map area, there is a red text box with the following text: [Click here to make a cash donation to PAS, to pay for packing & storing finds. For conservation & excavation of significant finds & to top up travel budgets.](#)

[Upcoming events](#)

[Database search](#)

[Contact a FLO](#)

[Conservation](#)

[PAS on Flickr](#)

[Treasure Act](#)

[Click here to make a cash donation to PAS, to pay for packing & storing finds. For conservation & excavation of significant finds & to top up travel budgets.](#)



# PAS Geographic News

## Click on map



## [PAS on Twitter](#)

### s   **Tweets & replies**   **Media**

**Portable Antiquities** @findsorguk · 1h

There is still time to get your tickets for the @britishmuseum @findsorguk conference - [britishmuseum.org/whats\\_on/event...](https://britishmuseum.org/whats_on/event...)

First we will hear @Tom\_Brindle talk about how @findsorguk data contributes to knowledge, with a discussion after led by @CarenzaLewis



The PAS Database is free to view and record and all find spots are recorded for posterity



<b>Useful Weblinks</b>
<a href="#"><i>PAS - getting involved</i></a>
<a href="#"><i>PAS - Upcoming Events</i></a>
<a href="#"><i>PAS - self recording</i></a>
<a href="#"><i>PAS -Recording Timeline</i></a>
<a href="#"><i>PAS - Advice for finders of archaeological objects including treasure</i></a>
<a href="#"><i>PAS - Conservation advice notes</i></a>
<a href="#"><i>PAS - Guidance to landowners, occupiers &amp; tenant farmers in England &amp; Wales</i></a>
<a href="#"><i>PAS - News from the scheme</i></a>
<a href="#"><i>Grid Reference Android Phone App</i></a>
<a href="#"><i>Responsible detecting code of practice</i></a>
<a href="#"><i>Frome hoard time lapse video of excavation</i></a>
<a href="#"><i>Press coverage of the Frome hoard discovery</i></a>
<a href="#"><i>Burnham hoard excavation</i></a>
<a href="#"><i>Staffordshire hoard excavation</i></a>
<a href="#"><i>Staffordshire hoard at the BM</i></a>
<a href="#"><i>Definition of Treasure</i></a>
<a href="#"><i>To Report Nighthawking - If in progress ring 999, if after the event click here &amp; enter post code, the phone number for your local Police Station is shown on the bottom right hand side</i></a>
<a href="#"><i>Rallies &amp; Events - Searcher Magazine</i></a>
<a href="#"><i>Rallies &amp; Events - Treasure Hunting Magazine</i></a>
<a href="#"><i>Wheresthepath - For O/S &amp; Aerial Maps &amp; National Grid References</i></a>
<a href="#"><i>Uk Grid Reference and Post Code Finder</i></a>
<a href="#"><i>Getting involved in archaeology</i></a>

## New members in September 2018

Brian and Mo and the team would like to thank and extend a warm welcome to all the new members listed below who have joined UKDN in the last month. Please introduce yourselves so that the members can welcome you aboard and make you feel at home. [Click here to introduce yourself](#)

If you are not already registered with UKDN you can register by clicking on this link and see what you are missing [Click here to register](#)

**philthedig**

**Deputyduke**

**gathering\_light**

**groch1904**

**saxoncollector**

**Dicov1066**

**Chrisj667**

**Magneto**

**farmerpete**

**glynowls**

**bobsteen**

**Hector**

**burtybee**

**chrisvenning**

**dig everything**

**duncjudi**

**MrGreenRS**

**Arnoldsods**

**bry22**

**Lazarus61**

**Cookie014**

**notell**

**bridigs**

**Carl J**

## Finds Liaison Officers (FLOs) and their work

The Portable Antiquities Scheme (PAS) has been extremely successful, thanks to the contribution of the many metal-detector users and other finders who have volunteered archaeological finds for recording. However, most FLOs are now working at capacity, and therefore unable to record all finds offered for recording. In some areas volunteers and self-recorders are invaluable, but it is nonetheless necessary for FLOs (Finds Liaison Officers) to develop strategies to decide what to record and meet finder's expectations.

The aim of this note is to summarise the guidance offered to FLOs by the PAS Central Unit (British Museum) on how to work under these pressures.

### General

- FLO areas are diverse in their geography, the number of finders and the number of metal-detecting clubs etc, and therefore the PAS needs to adapt to differing local circumstances.
- All FLOs share a job description which is the basis of the funding agreement between the British Museum (which manages the PAS) and the host partners (which employ FLOs).
- Although FLOs work flexible hours they should only work their contracted hours. Therefore they need to balance their time in and out of the office (in order to dedicate enough time to recording finds) by restricting non-office based activities, such as visits to metal-detecting club, finds days etc.
- FLOs receive guidance on PAS policy from the PAS Central Unit via national and regional meetings, and by email. FLOs will normally refer to staff at the Central Unit for guidance on issues such as Stewardship Schemes, nighthawking etc.
- Most FLOs welcome volunteers or self-recorders, but due to practical issues can only take on a certain number at any time. They also must work within the rules set by their local host partners.
- FLOs attend training offered by the British Museum and the PAS Finds Advisers. However, they will refer to other experts about finds offered for recording as necessary. **Unfortunately PAS staff cannot invest time investigating objects that are unlikely to be recorded.**

**Any misuse of social media or any other complaints should be reported to [info@finds.org.uk](mailto:info@finds.org.uk) or PAS, Department of Britain, Europe and Prehistory, British Museum, London, WC1B 3DG. Tel: 0207 323 8611/8618.**

### Finds Recording

- The core role of an FLO is to record archaeological finds to further our understanding of the archaeology of England and Wales. Outreach by FLOs is (normally) only undertaken to encourage the further reporting of finds (see above).
- FLOs record on average at least 1000 records a year and these take time to produce. They include a description of the find, find spot details, weight and dimensions, and a photograph or photographs. The PAS ID for the find allows finders to see it on-line and download a report should they wish to have one.
- FLOs will limit the number of finds they take in for recording, and this might vary from FLO area to FLO area. It is sensible for the FLO and finder to agree a time frame within which finds should be returned. FLOs will usually record finds on a first come first served basis, in order to be fair; occasionally there may be finds that require urgent attention that need to be prioritised.

Because many FLOs are working at capacity they need to be selective in what they record. It is at their discretion whether or not they record a particular find, based on local knowledge and



# PAS Prioritising Recording Guidance

This guidance note is designed to help FLOs prioritise the recording of finds that advance archaeological knowledge.

## General Advice

- It is strongly recommended that FLOs make full use of volunteers and self-recorders.
- Finders should be encouraged to show you all of their finds so that you, not the finder, can exercise discretion whether or not to record a particular find.
- Refer to the PAS guides (e.g. Lithics Recording Protocol) for specific advice.
- Familiarise yourself with the regional and national Research Agendas for your area.
- Keep up to speed with current research projects that use PAS data, especially the sorts of questions researchers are asking of it.
- Develop strong links with your local HER and your local network of heritage professionals, and make use of the Heritage Gateway; these sources of advice may prove important in terms of knowing whether a find or assemblage is important.
- It is good practice to make a note any local recording biases (e.g. only recording crotal bells that have interesting marks, or buttons associated with local militia).

**The final decision to record a find will be based on your local knowledge and experience, supplemented (where necessary) by the advice of colleagues. If in doubt, ask.**

## Recording Priorities

- Priority will be given to finds with good findspots; at least a 6-figure NGR, though ideally greater using GPS. Exceptions may be made in certain circumstances.
- FLOs will selectively record post-medieval objects and coins (i.e. those dating to after 1540). Exceptions can be made for items of social or historical interest.
- Priority will be given to Treasure finds in view of the time constraints stipulated by the Act.
- Priority will be given to new assemblages, such as those which indicate previously unknown sites, and finds which advance knowledge of known 'sites' or landscapes.

**Priority will be given to finds that hold greater potential for advancing knowledge of material culture (e.g. typology, dating, distribution etc.).**

## Priority Checklist (the more ticks an object has the more likely its importance)

- Does this find have at least a 6-figure NGR?
- Is it of national, regional or local importance?
- Does it help identify an area of archaeological potential?
- Does it shed new light on a previously known site?
- Is it an object type that is being researched, or has research potential?
- Is it potential Treasure?

**Is it likely to advance knowledge of material culture (such as typology)?**

## Advice to finders

## A cool way to record your find spot National Grid Refs

Download and install 'Grid Reference' app, a free mobile phone app which can give a 10 figure NGR if you have a Google account;

[https://play.google.com/store/apps/details?id=net.blerg&hl=en\\_GB](https://play.google.com/store/apps/details?id=net.blerg&hl=en_GB)

On the find spot, photo or video your find with your mobile phone and then run the app;

Select 10 figure recording for maximum accuracy

Wait until the maximum number of satellites are acquired for high accuracy

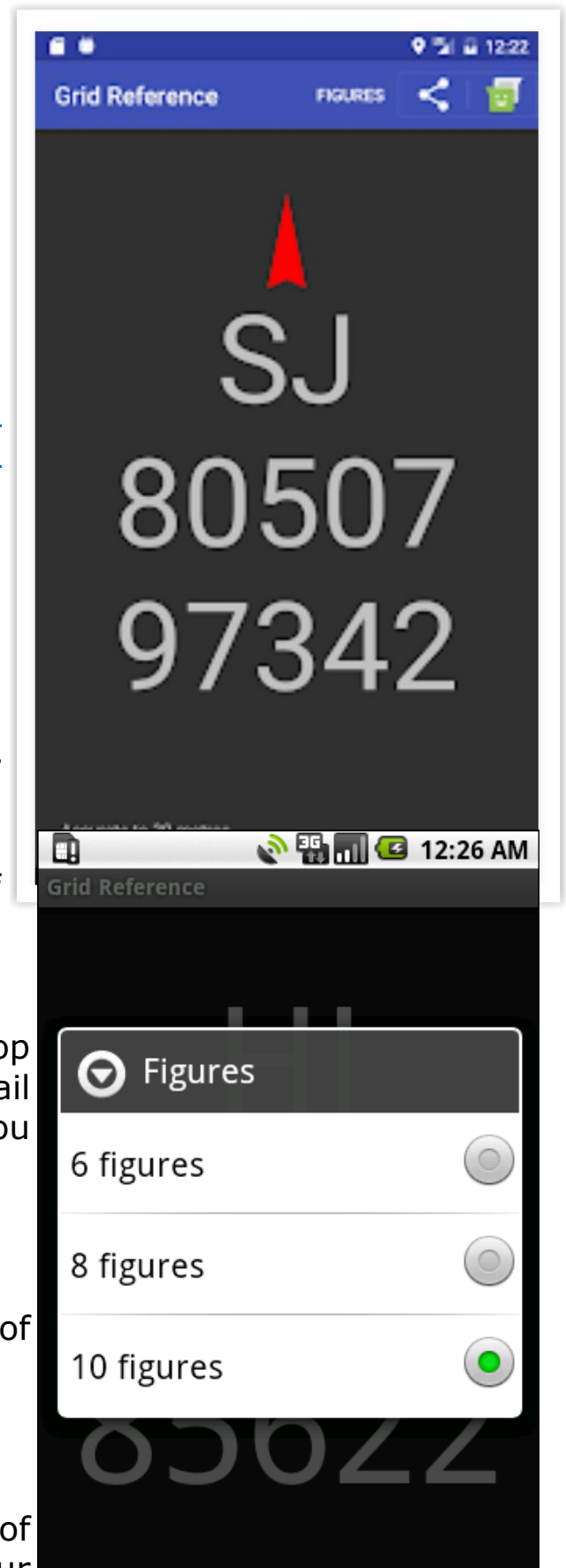
Click on the big letter M at the top of the screen - this lets Google email the grid reference to anyone you want to

Select your email address

Click on the paperclip at the top of the screen

Attach the photo of the find

Click on the red arrow at to top of the screen to send the email to your PC at home or mobile phone



# Finds Recording Sheets

Find Summary ID			
Find Site			
Date Found			
Terrain			
Grid Reference			
Material	Known	Estimated	
Find Identity	Known	Estimated	
Size	Length/mm	Width/mm	Weight/g
Reference Source			
Artifact date	Known	Estimated	
Reference Numbers	PAS	Other	

Find Summary ID			
Find Site			
Date Found			
Terrain			
Grid Reference			
Material	Known	Estimated	
Find Identity	Known	Estimated	
Size	Length/mm	Width/mm	Weight/g
Reference Source			
Artifact date	Known	Estimated	
Reference Numbers	PAS	Other	

Find Summary ID	Find Site	Date Found	Terrain	Grid Reference	Material	Find Identity	Size	Reference Source	Artifact date	Reference Numbers



# About us

UK DETECTOR NET was created on September 28th 2002 to bring together responsible metal detectorists everywhere to discuss the hobby, their finds, the machines they use and a million and one other detecting related subjects.

## Visit the forum

[Click here to visit forum](#)

## Contact UKDN

[enquiry@ukdetectornet.co.uk](mailto:enquiry@ukdetectornet.co.uk)

## UKDN magazines to download

[Download magazines here](#)

## View online

[View our Magazines online here](#)

If you would like to contribute to the newsletter please contact either UKDN as above or PhilD via PM,.

## UKDN aims

UKDN is a forum for people who are interested in the hobby of metal detecting. UKDN is an online community where members can exchange and share knowledge, their views, discuss the hobby, their finds, the machines they use and a million and one other detecting related subjects. UKDN actively works towards the following aims:

1. Develop a greater understanding of the hobby and some of the wider issues through healthy pro-active debate within the forum and through the monthly magazine, which is distributed to, and read by, our membership and beyond. The magazine includes UKDN based news and articles, as well as wider news, debate, and issues of heritage interest.
2. Provide a platform to inform beginners in the hobby of the basic principles in the use of a metal detector, gaining permission, site research, basic heritage law, farming scheme rules and in the 'best practice' for conservation, recording and co-operation.
3. Actively promotes the 'Code of Practice for Responsible Metal Detecting' to all members of the UKDN online forum and beyond.
4. Encourage all UKDN detectorists to record their finds with the appropriate bodies (depending where they detect); In England and Wales, this is with the Portable Antiquities Scheme, in Scotland this is the Treasure Trove Unit.
5. UKDN will actively work towards ensuring the future security of the hobby. We will liaise and co-operate with heritage professionals in a way which is mutually beneficial to all parties whilst maintaining our independence, and we encourage their active participation, either in the UKDN online community or through our on-line magazine.



# **Welcome to UKDN**

## **Your Information Pack**

Thank you for joining the UK's most responsible metal detecting forum. We hope it provides you with many hours of enjoyment. This document has been put together to make relevant information about all aspects of the hobby readily available to get you started as quickly as possible whilst adopting the best metal detecting practices.

UKDN (UK DETECTOR NET) was created on September 28th 2002 to bring together responsible metal detectorists everywhere to discuss the hobby, their finds, the machines they use and a million and one other detecting related subjects.

We have a membership list of over 8000 users which is growing daily and UKDN is a very lively forum which, as it's founders **Brian and Mo. Cross** intended, is still FREE to all users.

We run monthly Coin and Find of the Month Competitions which are sponsored by the Treasure Hunting magazine whom we thank for their support. We also run regular free UKDN lottery competitions with detecting related prizes.

### **UKDN Aims**


1. To develop a greater understanding of the hobby and some of the wider issues through healthy pro active debate within the forum and through the monthly Magazine, WORD which is distributed to, and read by, our membership and beyond. WORD Magazine includes UKDN based news and articles, as well as wider news, debate, and issues of heritage interest.
2. To provide a platform to inform beginners in the hobby of the basic principles in the use of a metal detector, gaining permission, site research, basic heritage law, farming scheme rules and in 'best practice' for conservation, recording and co-operation.
3. To actively promote the 'Code of Practice for Responsible Metal Detecting' to all members of the UKDN on-line and beyond.
4. To encourage all UKDN detectorists to record their finds with the appropriate bodies (depending where they detect); In England and Wales, this is with the Portable Antiquities Scheme, in Scotland this is with the Treasure Trove Unit.
5. UKDN will actively work towards ensuring the future security of the hobby. We will liaise and co-operate with heritage professionals in a way which is mutually beneficial to all parties, whilst maintaining our independence, and we encourage their active participation, either in the UKDN on-line community or through our on-line Magazine.

### **Invite a friend to join UKDN**

If you enjoy your visits to UKDN, please consider forwarding this .PDF to a friend inviting him or her to join UKDN, making the forum even bigger and better, by clicking on this link;

**[Join UKDN Here](#)**

**Illegal metal detecting on Scheduled Ancient Monuments, (known as Nighthawking when carried out at night), is smearing the image of our hobby. Should you know of this activity going on, please report it to the local Police, ring 101 or if in progress ring 999.**

<h2>PAS or HER Finds Recording</h2> <p>Essential if you don't want to leave holes in the archaeological record. To record a find with PAS, contact your Finds Liaison Officer (FLO), who can generally be found at your local Museum (see contact list) . FLO's visit metal detecting clubs too which is a good reason to become a club member.</p>	<a href="#">PAS - Get Involved</a> <a href="#">PAS Contact List</a> <a href="#">Regional Map</a> <a href="#">Advice for finders</a>
<h2>PAS Database</h2> <p>The database contains over 400,000 objects recorded since the creation of PAS in 1997, the vast majority recorded by metal detectorists.</p>	<a href="#">Search Database</a> <a href="#">Search Images</a>
<h2>Historic Environment Records (HER)</h2> <p>You can also record your finds with your county Historic Environmental Records (HER). They also have archaeological records for your area including Tithe Maps &amp; details of Scheduled Ancient Monuments (SAM's).</p>	<a href="#">Contact Details</a> <a href="#">Get involved in archaeology</a>
<h2>Coin Identification</h2> <p>There are lots of internet sites that are useful for identifying coins, here are just a small selection.</p>	<a href="#">Milled</a> <a href="#">Hammered</a> <a href="#">Roman</a> <a href="#">Roman Modern</a> <a href="#">Celtic</a> 
<h2>Maps</h2> <p>Essential for recording &amp; plotting your find spots &amp; researching you sites. The Google Earth with combined O/S map can give you a 10 figure NGR (National Grid Reference). With the Google Earth Version 5.0 you can download your find spots &amp; routes taken with a Global Positioning System (GPS). Magic Map can show no go areas such as SAM's &amp; SSSI's &amp; show ELS agreement land. British History &amp; Vision of Britain are historic maps.</p>	<a href="#">Google Earth &amp; OS 10fig NGR</a> <a href="#">Google Earth Pro</a> <a href="#">Google Earth Fly To</a> <a href="#">Bing Map</a> <a href="#">Magic Map</a> <a href="#">ELS/HLS Land &amp; SAM'S</a> <a href="#">British History</a> <a href="#">Vision of Britain</a>
<h2>Treasure Act &amp; Treasure Trove</h2> <p>Care should be taken excavating treasure &amp; consideration given to it being removed by archaeologists so it's provenance can be properly recorded. Do not clean the find, as this could affect the conservation &amp; therefore the valuation. It must be reported within 14 days, take plenty of photo's &amp; get an independent valuation before handing in if possible.</p>	<a href="#">Treasure Act England &amp; Wales</a> <a href="#">Treasure Trove in Scotland</a>
<h2>Treasure Definition</h2>	<a href="#">See page 8 for definition</a>
<h2>Treasure Reports</h2>	<a href="#">2000/1</a> <a href="#">2001/3</a> <a href="#">2003/4</a> <a href="#">2004/5</a> <a href="#">2005/6</a>
<h2>Treasure Valuation Committee (TVC)</h2> <p>The TVC has regular meetings to value treasure items found, based upon past valuations &amp; latest commercial information. Their findings can be contested, by submitting your own valuation.</p>	<a href="#">Valuation Info see page 36</a>
<h2>UK DETECTOR NET Useful Links</h2>	<a href="#">UKDN Magazines</a> <a href="#">UKDN Beginners Section</a> <a href="#">UKDN Glossary</a>



## Detector Manuals

[Bounty Hunter](#)  
[C Scope](#)  
[Fisher](#)  
[Garrett](#)  
[Minelab](#)  
[Tesoro](#)  
[Viking](#)  
[Whites](#)  
[XP](#)  
[Makro](#)  
[Teknetics](#)

## Magazines

[UKDN WORD Magazine](#)  
[Searcher](#)  
[Treasure Hunting](#)

## Joining a Club

[List of Clubs](#)

## Insurance

Highly Recommended, essential for Club members, inexpensive.

[NCMD](#)  
[FID](#)

### Detecting - Permission must be obtained

Detecting permission is required for all land, it is generally easiest to get on beaches, some areas are owned by the Crown Estate (terms & conditions apply) & some by local Councils who tend to prohibit it, but still try.

Permission on farm land means knocking on farm doors or writing to Landowners to ask permission to search the land (best obtained in writing in case of any later dispute should something of high value be found).

On Entry Level Stewardship (ELS) land you must strictly follow the Responsible Detecting Code of Practice in England & Wales (see below) so Landowners do not compromise the terms of their agreement.

Parks too are generally down to the Local Council who may be worth asking if you can convince them you will cause the minimum of disturbance to the grass, will remove litter, needles, glass etc , leaving it better than it was.

**\*Detecting is prohibited or special permission must be obtained, these sites are generally shown on the Magic Map, ask your FLO or HER (see over).**

[Beaches - Crown Estate](#)  
[Farm Ownership](#)  
[Farm Register](#)  
[Farm ELS Rules](#)  
[Parks \(email Council\)](#)  
[Public rights of way](#)  
  
[ELS/HLS Land, Battlefields & SAM's, SSSI's in England Map\\*](#)  
[Nature Reserves Map\\*](#)  
[SAM's in Wales Map\\*](#)  
[SAM's in Scotland Map\\*](#)  
[Thames foreshore Rallies](#)

## Codes of Practice

Please respect the Countryside Code. The Responsible Detecting Code of Practice is regarded best practice by those concerned about our heritage.

[Countryside Code](#)  
[Responsible Detecting - Code of Practice](#)

### Portable Antiquities Scheme (PAS) Finds Recording

The PAS is a voluntary scheme to record archaeological objects found by the public in England & Wales. If recorded these finds have the potential to tell us much about the past, such as how & where people lived & about the types of objects they made & used. A recording accuracy of 6 figs min is preferred. Contact your local Finds Liaison Officer to record (see over).

**Treasure our past & record it with PAS**

[Recording via GPS](#)  
[Purchase a GPS](#)  
[GPS App for Mobile Phones](#)  
[Recording via O/S](#)  
[Bagging, Storing & Conserving finds](#)

## **Some Benefits of Metal Detecting**

### **For the Nation**

Increasing;

Britains international, county & village status with some awesome finds

Tourism & Museum Visits

Our knowledge of the past

### **For the Archaeologists**

Assisting;

With Community Archaeology Digs

With Battlefield & Time Team Surveys

With pre construction surveys

Some of above free of charge

Locating;

New archaeological sites

Providing;

Data for research & degree projects via the Portable Antiquities

Scheme Database

Recording;

Everyday finds & Treasure finds

Reporting;

Incidents of Nighthawking

Rescuing;

Coins & artifacts from the effects of farming equipment & chemicals

### **For the Public**

Contributing;

To our heritage by recording finds

Creating;

Employment for hobby manufacturers & dealers

Educating;

By giving talks & showing finds

Raising;

Money for charities

Recovering;

Lost rings, keys etc free of charge

Removing;

Litter, sharp metal & glass from beaches & recreation grounds

Fly tipping  
Vandalism  
Hare coursing

Locating:  
Lost farming equipment, underground cables & pipes  
Metal objects swallowed by livestock

Payment;  
To landowner or charity as required

Possibility;  
Of finds of significant value or Treasure

Removing;  
Large pieces of iron that might damage machinery  
Lead & green waste  
Objects detrimental to the health of livestock

Reporting;  
Trespassers & explosives  
Problems with the land  
Injuries to livestock  
Any human remains found

Revealing;  
The history of the land

### **For the Detectorists**

Adventure  
Being in the countryside  
Closeness with nature  
Companionship  
Escapism to a whole new world via the headphones  
The thrill of the chase  
Feeling of making lots of new friends with fellow detectorists,  
farmers, archaeologists & UKDN forum members  
Freedom of the great outdoors  
Fresh Air  
Healthy exercise  
Joy in showing finds to each other  
Learning about finds, history & archaeology  
Pleasure in contributing by recording  
Possibility of finds of county or national importance  
Possibility of finds of significant value or Treasure  
Relaxation  
Seeing new places  
Sharing experiences, pictures of finds, wildlife and scenery on the



# Landowner & Detectorist Search Agreement

I am seeking permission to search your land in compliance with the terms & conditions of your [Environmental Stewardship Scheme](#), [The Code of Practice for Responsible Metal Detecting](#) & [Guidance for Land Owners, Occupiers & Tenant Farmers in England & Wales](#) agreed with

## Finds may fall into several categories

### Rubbish

Most farmland is contaminated with lead and iron rubbish, some of which can damage farm equipment. This will be removed and the location of any large underground metalwork pointed out to you.

### Portable Antiquities

Finds over 300 years old that are not [Treasure](#) will be recovered in a proper manner and reported to the [Portable Antiquities Scheme \(PAS\)](#) for recording on the [National Database](#) along with their find spots in accordance with the [agreed code of practice](#). Finds of significant value (£ agreed with your self) can be sold and the proceeds shared 50/50 should you wish [ ]. Finds of lesser value I the finder shall own and [conserve](#) [ ].

### Treasure

Finds will be recovered in a proper manner. All finds of potential treasure are the property of the Crown and must be reported to the Coroner within 14 days of discovery.

The Coroner will decide whether the finds fall within the definition of Treasure as contained in the [Treasure Act 1996](#).

It will then be for the [Treasure Valuation Committee](#) to assess it's potential value and the disbursement of any reward.

If no museum has expressed an interest, the find

You will be kept informed of ALL finds made on your land by means of photographs via regular emails and details of all finds recorded by the PAS.

When all detecting is completed you will receive a memory stick containing records in chronological order of all



Agreed by the Landowner .....

Address .....

Agreed by the Detectorist .....

Address .....

Click on the images for more info



# Code of Practice for Responsible Metal Detecting in England and Wales



Guidance for landowners, occupiers and tenant farmers in England and Wales

Metal-detecting, Field-walking and Searching for Archaeological Objects: guidance for landowners, occupiers and tenant farmers in England and Wales

This guidance had been jointly produced by the Country, Land & Business Association, the National Farmers Union and the Portable Antiquities Scheme, September 2010.

## Best Practice

### Conservation Advice Notes



UKDN Detecting Guide - by PhilD			
What do I need	Where can or can't I detect	What might I find	What should I do when I find something
Equipment	Farm land permission req'd	Modern finds under 300 yrs old Lead, tin, copper alloy, silver & gold	Recording find spots with an O/S map or GPS or online map
Permission from the landowner finds agreement	Beaches Permit req'd for Crown Estates	Recordable finds over 300 years old Lead, tin, copper alloy, silver & gold	Recording with PAS Recording Treasure Trove
Club Membership can provide land	Mudlarking Permit req'd	Treasure finds Inform Bods, Organiser & FLO	What recording can tell us
Consider NCMD or FLO membership & insurance	Local parks & Council land permission req'd	Saxon Burials & Church Burials Stop digging & report to PAS FLO	Archaeological objects including treasure
Comply with the Responsible Detecting code of practice	Avoid SAM's & SSSI's in England, Wales & Scotland	Green Waste never allows take care	Bagging, cleaning & conserving finds
Understanding of the Treasure Act or Treasure Trove (Scotland)	Avoid National Trust land and Nature Reserves	Dinosaur never allows take care	Please consider donating your finds to a Museum
Understanding of hand recovery	Avoid battlefields to retain their battle history	Ordnance - stop digging call Police Lots of Muckel Bolls for the FLO	Getting involved in archaeology
PAS Guide for landowners & farmers & RFLV Guidance Note	Avoid footpaths	Join UKDN & our Finds Advisers will ID your finds & save you a PAS valuable time	PAS Frequently asked Questions