

# UKDN WORD

WORLD OF RESPONSIBLE DETECTING

Issue no: 135  
November 2018



Look at Lindisfarne



Photo Comp Winners



Detecting in the Past

Inside...News, Views, Articles, Reports and more



# ***UKDN Word Table of Contents***

*Click on the title to go to the page*

## ***Regulars***

***4 - Welcome Message***

***5 - Did You See***

***24 - News And Views***

***26 - Latest Farm News***

***27 - Local Heroes***

***34 - Useful Websites***

***35 - New Members***

## ***Competition Results***

***19 - DSLR Photo Competition***

***21 - P P & P Photo Competition***

## ***Features***



***6 - My Past Metal Detecting History by Denny***



***13 - Time Team Reunion on Lindisfarne by Barbados Rum***



UKDN would like to thank Jimmytheferret for the front cover image, DetectingDavid for image enhancement and UKDN members for their input.



## admin team

### Brian & Mo'

Founded UKDN in Sept 2002

Detecting since 1978



### Coreservers

Word Assistant Editor

Here since 2003

Detecting since 2003



### Kev Woodward

Here since 2005

Detecting since 1990

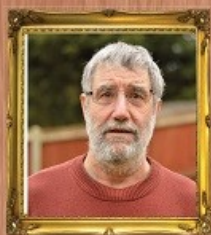


### Popsandme

Here since 2009

Detecting since 2009

## Moderators



### Chasm\_norwich

Here since 2014

Detecting since 1985



### Baldric

Here since 2004

Detecting since 2003



### Hectorsfarm

Here since 2012

Detecting since 2011



### Firthy77

Here since 2006

Detecting since 1970



### Dendro\_Tom

Here since 2014

Detecting since 1985



### Arfrape

Here since 2007

Detecting since 2005





..... To this the 135th edition of your Word magazine published on 1st November 2018. This is a 47 page issue which contains an article from Denny on detecting many, many years ago, and an article from Paul King on his meeting some celebrities at a Time Team Reunion. All interesting stuff.

Here we are at the beginning of November and most of us are still able to get out into the fields with our detectors. The weather is being fairly kind to us for the time of the year. We had a bit of frost and really cold weather over last weekend but, overall, most of us have fared well considering it is now into November.

The forum is doing well for numbers attending on a daily basis but, behind the scenes, we have been struggling and need to make you aware of it. We get new members wanting to join every day but we have to vet every single one of them because..... More than 50% are from spammers trying to get past our vetting procedures by hiding the IP address location using a VPN (Virtual Private Network). They do this so that an IP address coming from Vietnam or India can appear to come from London or Kent and therefore seem legit. Thankfully our guys can now spot these fake accounts and throw them into the trash bin where they belong.

Last week we suffered a server attack which we got around and managed to halt. It's amazing to think that whilst we are going about our daily business metal detecting and writing articles and stuff there are others who are planning to attack our server and forum.

Anyway, on to metal detecting.... There have been some brilliant coins and artefacts posted during the past month. Something in my water tells me that this new season is going to be a fantastic season for finds posted on UKDN. Already we have seen some lovely Roman and Saxon silver, some fantastic hammered coins, a great lion brooch and much, much, more. To see some great finds simply go to [This Link](#) and [This Link](#)

Until next month good hunting and keep posting your coins and finds onto the forum.



# Did you See

With almost 500 members visiting every single day and 100's of new posts every day it is so easy for you, the members of UKDN, to miss out on some very interesting posts. So, each month in the magazine we will bring to your attention some posts that you might have missed like.....click on the link

<b><i>Head phones WS3</i></b>	<b><i>Interesting ... and exotic</i></b>
<b><i>Buttons for id</i></b>	<b><i>Denarius? for ID please</i></b>
<b><i>More work</i></b>	<b><i>Romans in the rain</i></b>
<b><i>Buttons and bits</i></b>	<b><i>Lost ring</i></b>
<b><i>A few finds</i></b>	<b><i>2 lizzy for I'd please</i></b>
<b><i>Another day on the stubble.</i></b>	<b><i>Roman lion brooch</i></b>
<b><i>Myself and detector update</i></b>	<b><i>Hospital visit.</i></b>
<b><i>WHITES DFX ECLIPSE 950 Coil.</i></b>	<b><i>ID on hammered please</i></b>
<b><i>Another Two Hammered's For ID Please</i></b>	<b><i>Farm find</i></b>
<b><i>Change of fortunes for me!</i></b>	<b><i>Rose orb jetton</i></b>

# **My Past Metal Detecting History By Denny**

I first became acquainted with metal detecting about 1975 when it was in its first stages in the UK. I was quite fascinated by the idea of making my fortune by scanning the local beaches which in those days in my area were extremely busy during the Summer with holidaymakers.

I obtained a C-Scope catalogue and was intrigued by the technology and decided to "have a go". However having my own shop and always on the lookout to make an extra penny or two I approached C-Scope with a view to retailing their products. They were kind enough to offer me an agency and it started from there !

After receiving my stock one of my first jobs was to place an advert in Treasure Hunting magazine and local papers and wait! I was jolly pleased to start getting enquiries from both local sources and those from much further away - in some cases from up to 100 miles away! I was stunned. The reason was, of course that as the hobby was in its infancy there was a shortage of retailers. So as well as taking up a new hobby I was also making money! An ideal situation ?

We also started stocking Fieldmaster units and I managed to contact the UK importer of Garrett detectors which in those days were in short supply and were the "Bees Knees". He was a young man living in London and who'd had a lot of treasure experience as a Mudlark on the Thames foreshore.

Such was the demand for these Garrett units that to get stock I had to travel by rail to London, load a taxi with as many as I could, back to Euston and load my stock into the Guards van and get back to the shop "poste haste" Goes without saying that I was a lot younger in those days and was full of enthusiasm.

I continued to retail detectors for quite a while until other shops arose like mushrooms all thinking that they were going to make a living at it not realising that each new outlet would possibly reduce profits by half and I finally, sadly, had to give in. Ah Well we can write it down to experience can't we ?

*(Continued on page 7)*



*Our Shop in 1977*



*With Alf from Corrie in 1979*

*(Continued on page 8)*



*(Continued from page 7)*



*Our stand at a CB exhibition in 1978*

In those early days an ancient historical site which was situated atop of the local quarry was in danger of disappearing entirely. Some investigation had taken place under the guidance of one of the local grammar school teachers and a brief archaeological survey under a Mr Savoury had taken place during the early part of the 20<sup>th</sup> Century.

*(Continued on page 9)*



*(Continued from page 8)*

Being interested in our local history (I have at the moment approx. 500 historical photos of the local area) I approached the quarry manager for permission to investigate the site. This was readily given and from that date I used my (early) detector to investigate. In fact over a period of probably a year I had great pleasure in closely searching the area. The result was that I found approximately 30 or 40 roman coins of various denominations together with one or two artifacts. I would point out at this point that this was in all probability not a roman site but one of local inhabitants. My theory is that roman legions passing through the area needed supplies in the way of food, etc and paid in roman coinage (I may be wrong !!) I was ably helped by my young son who was about 13 at the time.



*Adam in 1976*

In a subsequent year a dig took place by Clwyd and Powis Archaeological Trust and the leader of the group heard that I had had some experience of the area and came along to see what info. I could supply. He was extremely interested in the coins, etc and subsequently asked whether I would be willing to donate them to Cardiff Museum. This I did and was informed that it would be known as "The Parr Collection"

*(Continued on page 10)*

*(Continued from page 9)*

At the time I was rather disappointed that Cardiff Museum did not acknowledge receipt of the donation but didn't take it any further. However two or three times in subsequent years since then I have approached the museum by email two or three times to enquire whether they have still the collection but never got a reply! I promised myself that I would never again donate my finds to the museum!

However I recently was able to make another contact at the CPAT who managed to confirm that after a long search as far as Cardiff knew the coins were still in their possession under my name but found to be in an odd box somewhere mixed with other items. I include part of the confirmation message .....

...." There is a little box containing 51 Roman coins and a small scrap of iron in the Reserve, with a CPAT label on which is 'DINORBEN Parr Collection Roman coins', all identified by George C Boon.".....  
NOT encouragement to donate your finds!

However although I'm 88 I am now detecting again and in contact with the local PAS liaison officer about any recent finds that I may make.

After starting off with a couple of Chinese detectors (one a Garrett 250 copy which was a very good unit) I now use a TekneticsT2 which is pretty powerful at finding small items and is super easy to use.

I attach a couple of old photos of myself and my young son detecting in the 70's and illustrations of my shop display and exhibition stand, etc.

Hope that I haven't bored you all with this narrative? My wife always complains that I talk too much.

There are two more photos overleaf.

© Dennis Parr October 2018









## **We know cancer is expensive**

**If you are worried, call the  
Macmillan Support Line free on  
0808 808 00 00**

**Monday to Friday, 9am to 8pm or  
visit [www.macmillan.org.uk](http://www.macmillan.org.uk)**



# Time Team Reunion on Lindisfarne

By Barbados\_Rum

How time flies! I can't believe that the DigNation weekend had finally arrived after booking the tickets in December 2017. It was also an opportunity to meet up with the DigVentures team after a very successful two-week excavation earlier this year where they uncovered a possible C1st Roman villa on a permission of ours.

DigVentures organised the DigNation event along with Sir Tony Robinson and was an added attraction to the three-week dig they were already involved with on Lindisfarne. The event was held on the weekend of Saturday 22nd and Sunday 23rd September 2018.

Our team were invited to survey the trenches that DigVentures were excavating which was a dream come true, actually being allowed to detect one of the first monasteries in Britain!



*Phil Harding and Indie Jago at the dig site with Lindisfarne Castle in background*

*(Continued from page 13)*



*Myself and Phil Harding*

We weren't too sure how the weekend would turn out as we had so much on with a possible new permission to visit in Northumberland, a metal-detection survey around the trenches and of course, the lectures given by the Time Team crew to look forward to.

I did wonder if we would see any of the Time Team guys "up close and personal"..... ironically (and unbelievably), we ended up drinking with them in the local pub as well as chatting to them in the green room attached to the lecture theatre. This was so surreal..... actually chatting to all of the surviving Time Team members that attended the Mick Aston tribute on Lindisfarne in a totally relaxed and open way.

*(Continued on page 15)*



*(Continued from page 14)*

Rob and I spent an hour sat chatting to Phil Harding in the pub about all things archaeological and detecting-wise and then Francis Pryor, Stewart Ainsworth, John Gater, Helen Geake, Carenza Lewis, the executive producers and all the support crew that helped create Time Team as we saw it on TV.

Meanwhile, we called in to a farm we'd researched for a possible new permission and met up with the landowner. He was so kind and accommodating, he said help yourselves! The field was cultivated stubble but the soil was quite soft and fluffy. It started off well with a Roman brooch appearing as the second signal rang out, unfortunately nothing else was recovered, probably as a result of the soil conditions.

We made our way back to The Holy Island of Lindisfarne to see what areas DigVentures wanted us to survey. We started on the soil heaps and were excited to find two hammered coins; an Elizabethan sixpence in fair condition and a heavily clipped shilling of James Ist.

I saw that there were various books on sale about Time Team, archaeological books written by Time Team members and the autobiography of Sir Tony Robinson; 'No Cunning Plan'.

Tony was doing a book signing so I thought it a good opportunity to get him to sign the book I'd bought.

So, I queued with the others and thought "hang on, I've never done this before, what do I say when I get to where Tony was sat!?".

Here it was, my turn! I blurted out "go easy on me as it's my first book signing" to which he shouted "Get out!!" He then smiled and asked what to write.... Tongue-in-cheek (as we all know the past history with Tony and detectorists) I said "To Paul, The Detectologist" to which again he shouted "Get Out!!!" only this time I thought he meant it! Thankfully he laughed and signed accordingly.

Rob meanwhile was behind me in the queue and wondered what the hell was going on as he couldn't hear what I was saying to make Tony react the way he did.

*(Continued on page 16)*

*(Continued from page 15)*



*Myself and Tony at the book signing*

One of the lectures was given by Helen (Geake) and we managed to get front row seats alongside the Time Team gang. Unknown to us, the lecture was about metal-detectorists and the progress made with them and the Portable Antiquities Scheme.

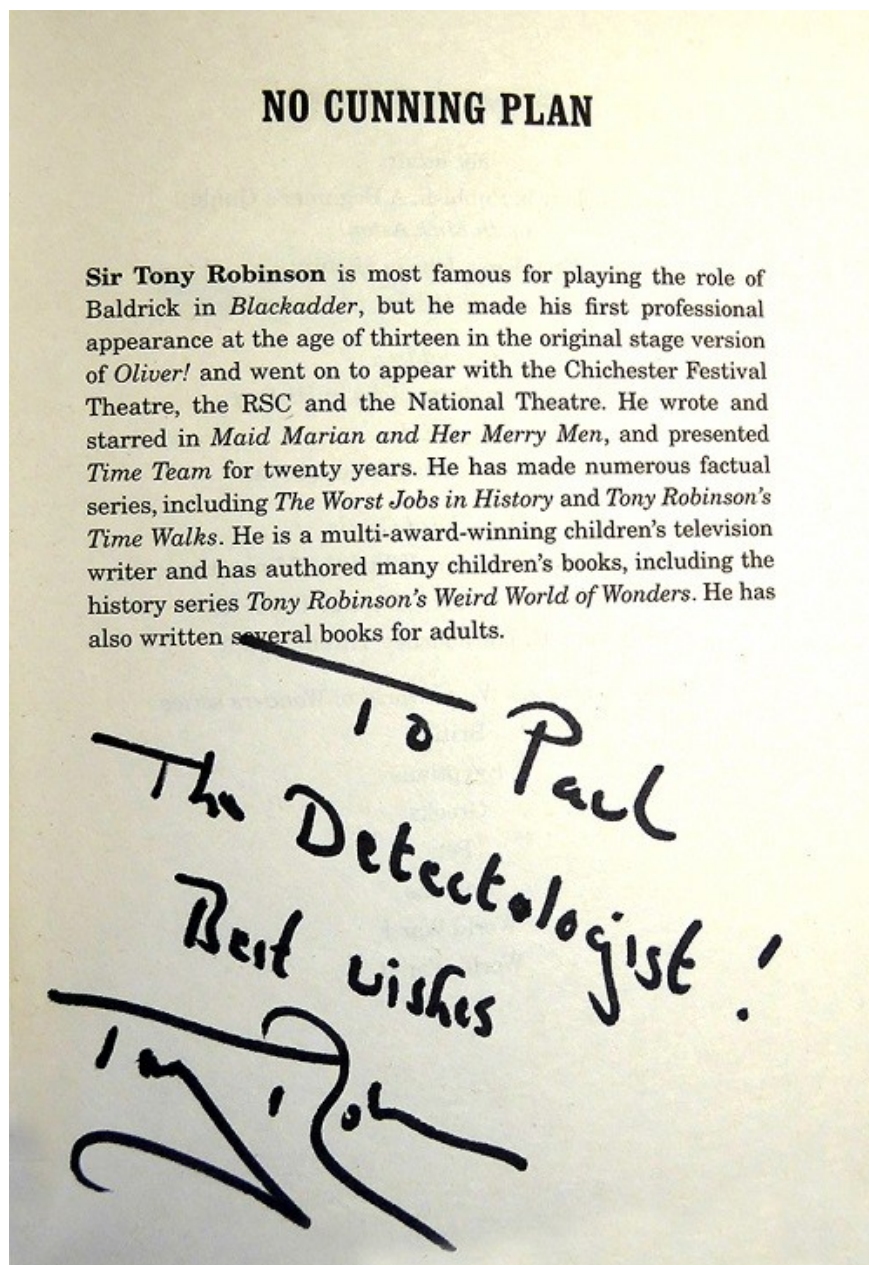
We thought this should be good, until it came to the questions and answers part..... Tony got up on stage and started talking about metal-detectorists and kept looking at me in the eye. I thought "Oh no, revenge time".

Thankfully, after looking the other way several times, the lecture ended on a good note without being picked on.

Part of the DigNation gig was a Saturday night party that involved an inflatable pub, a live performance in the lecture hall and, of course, more trips to the local pub! It was so strange seeing your Time Team icons all over the place and well up for a chat.

*(Continued on page 17)*





The climax of the weekend was a private party on Sunday night at the DigVentures hotel with members of Time Team enjoying the free flowing bar too! Can't believe I was sat on a bean bag chatting with Helen Geake and discussing LiDAR and other remote-sensing techniques with Stewart Ainsworth! John Gator was also on-hand for topical discussion.

(Continued on page 18)

*(Continued from page 17)*

Back on the mainland, as we were leaving the campsite, we had a chat with the landowner and we learnt that the farm had several acres of arable, I couldn't resist the temptation to ask.....



*Above - Mick Aston Tribute. Below - Lindisfarne Island with castle in silhouette*



So, that was it, two new permissions, two hammered coins, two days of pure hallucination and two days of meeting new friends, contacts and of course.... the Time Team members in the flesh and in a situation that was totally surreal.

© Paul King October 2018



## **UKDN FUN DSLR - Camera PHOTOGRAPHIC COMPETITION**

### **Winner - Jimmytheferret**

**Young girl at the Village At War event**

**Nikon D300S with Nikon 70-200 F2.8**



## **UKDN FUN DSLR - Camera PHOTOGRAPHIC COMPETITION**

### **Runner-Up - Restyler**

**A Great Day Out - (this guy was just the happiest I've ever seen on a race track)**





# **UKDN FUN PP & P - Camera PHOTOGRAPHIC COMPETITION**

**Winner - Dig-it-Pete**  
**Southern Hawker Dragonfly**  
**Panasonic FZ200 bridge camera.**



***Runners-up overleaf***

# UKDN FUN PP & P - Camera PHOTOGRAPHIC COMPETITION

## Runners-Up

**2nd**



**Restyler**  
**Shooting Shrooms**  
**Olympus TG-860**

**3rd**



**Old Git John**  
**Waiting for the tide.**  
**Kodak bridge camera.**

Thankfully we got some entries in this category this month otherwise this section was going to be binned. Please keep those photos coming please guys.



# **ARCHAEOLOGY-TYPE FINDS BAGS EXCELLENT**



*Made of strong, durable 200 gauge polythene with grip-seal openings and with three write-on panels.*

*Supplied in a three useful sizes to suit all occasions i.e. 1.5" x 2.5 inch for coins and very small finds, 2.5" x 3 inch for larger coins and artefacts and 4" x 5.5 inch for the larger finds.*

*Sold in batches of multiples of 100 e.g. 300 or 600 or just 100, 500 and 1,000.*

*All sold at very competitive prices*

*with no rip-off fees for postage. For more info and to order go to the UKDN Shop via the link on the below.*

*100 small bags - £2.90 INC. postage  
500 small bags - £9.20 inc. postage  
1000 small bags - £13.99 inc. postage*

*100 medium bags - £3.20 inc. postage  
500 medium bags - £9.90 inc. postage  
1000 medium bags - £15.50 inc. postage*

*100 large bags - £4.99 inc. postage  
500 large bags - £14.50 inc. postage  
1000 large bags - £23.00 inc. postage*

**[Link to UKDN Shop](#)**

# ***News and Views from October 2018***

***Ice Thaw Reveals Ancient Artefacts***

***Roman villa found discovered next to park and ride***

***Vandals damage Pentre Ifan burial chamber***

***Police crack down on nighthawking in Norfolk***

***Rewriting the history of Offa's Dyke***

***Sutton Hoo: Computer image of Anglo-Saxon ship***

***Bronze Age gold ring find***

***Entire Church Roof Stolen!***

***A14 upgrade: Bronze Age pottery found***

***8 year-old girl pulls pre-Viking sword from lake***

***Iron Age horse and chariot discovered***

***Remains of real Wolf Hall discovered...***

***Roman grave uncovered during A66 roadworks***

***Europe's Oldest Intact Book Found in saints coffin***





Operation Chronos is a National Operation tackling Unlawful Metal Detecting .

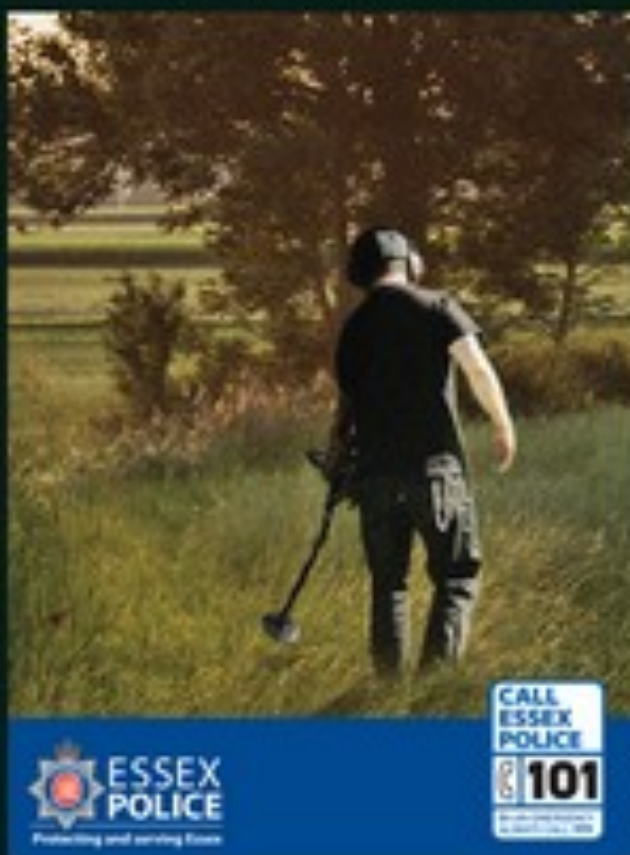
You can contact Operation Chronos via the following:

Pc 677 Andy Long, UK co-ordinator  
chronos@essex.pnn.police.uk  
Tel: **07890 513899**

Your local Police Heritage Crime Officer on **101**



Scan this QR code with a smart phone to visit the Operation Chronos webpages.



### What is Nighthawking?

Nighthawking is a term used in the United Kingdom to describe illegal metal detecting on farmland, archaeological sites and other areas of archaeological interest, usually in order to steal coins and other artefacts for their historical and financial value. Nighthawking refers to the fact that such illegal activity is often undertaken at night to avoid detection and arrest. Although this is deceiving as it also occurs during the day. It can occur anywhere in the country, but counties such as Yorkshire, Essex, Kent, Lincolnshire, Norfolk, Cambridgeshire and Suffolk are particularly vulnerable due to the rich heritage and large amounts of arable land that exist in these areas.

### What should you do if you find Night Hawks on your land?

Whether day or night, if you find Nighthawkers on your land call the Police on 999, as there is a crime in progress. Do not approach them as this would scare them off or they may become aggressive towards you. Gather information by taking registration numbers of vehicles and descriptions of those involved and pass these details to the Police immediately.

[Crime in your area](#)  
[click on Crime Map](#)



## News

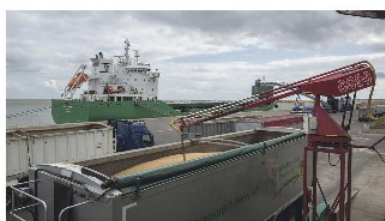


### Have your say on the future of the AHDB: just two weeks left to share your views

News 27 Oct 2018 06:00

As farmers, growers and processors will know, we are gathering views on the role of AHDB, writes Farming Minister George Eustice.

[arable](#), [Business](#), [farm life](#), [livestock](#)



### Keeping an eye on the grain market: October 25 update

News 26 Oct 2018 13:25

What to watch: A stop in production for the Ensus ethanol plant in Teeside in November is yet another negative story for UK domestic wheat demand.

[arable](#), [Business](#), [Prices & trends](#)



### Nottingham University researchers to grow crops underground

News 25 Oct 2018 14:44

University of Nottingham academics are exploring a new concept for subterranean farms as an alternative approach to large scale crop production.

[arable](#), [Arable Farming](#), [Crops](#)



### Ensus biofuels plant to 'pause production'

News 25 Oct 2018 13:48

CropEnergies, parent company of Ensus, the biofuels plant in Wilton, Teeside, has announced that the facility is to 'pause production' from the end of next month due to difficult market conditions.

[arable](#), [Arable Farming](#), [Harvest](#)



### FUW and NFU Cymru launch first ever joint campaign to keep direct payments

News 25 Oct 2018 04:00

NFU Cymru and the Farmers' Union of Wales have set up their first ever joint campaign to persuade the Welsh Government to keep some form of direct payment after Brexit.

[arable](#), [Business](#), [livestock](#)







Detectorists are seen by the public as portrayed in the media, dare I say as the good, the bad and the ugly, ie;

- Those who are recovering our history for the benefit of future generations by following [the code of practice for responsible metal detecting in England and Wales](#) agreed by all parties including the NCMD, the NFU and English Heritage, by helping in the community and recording their finds.

- And by reporting all finds as [Treasure Trove in Scotland](#).

- Those who are depriving future generations of our history by not following the code of practice and not recording their finds even though [recording is mandatory in the countryside stewardship landowners agreement](#).

- Those who are thieves who use detectors to steal from farmland and Scheduled monuments.

This new section of the magazine is to promote good practice and is dedicated to the ambassadors of the hobby of whom we are so proud. Their deeds have

**CODE OF PRACTICE FOR RESPONSIBLE METAL DETECTING UPDATED**

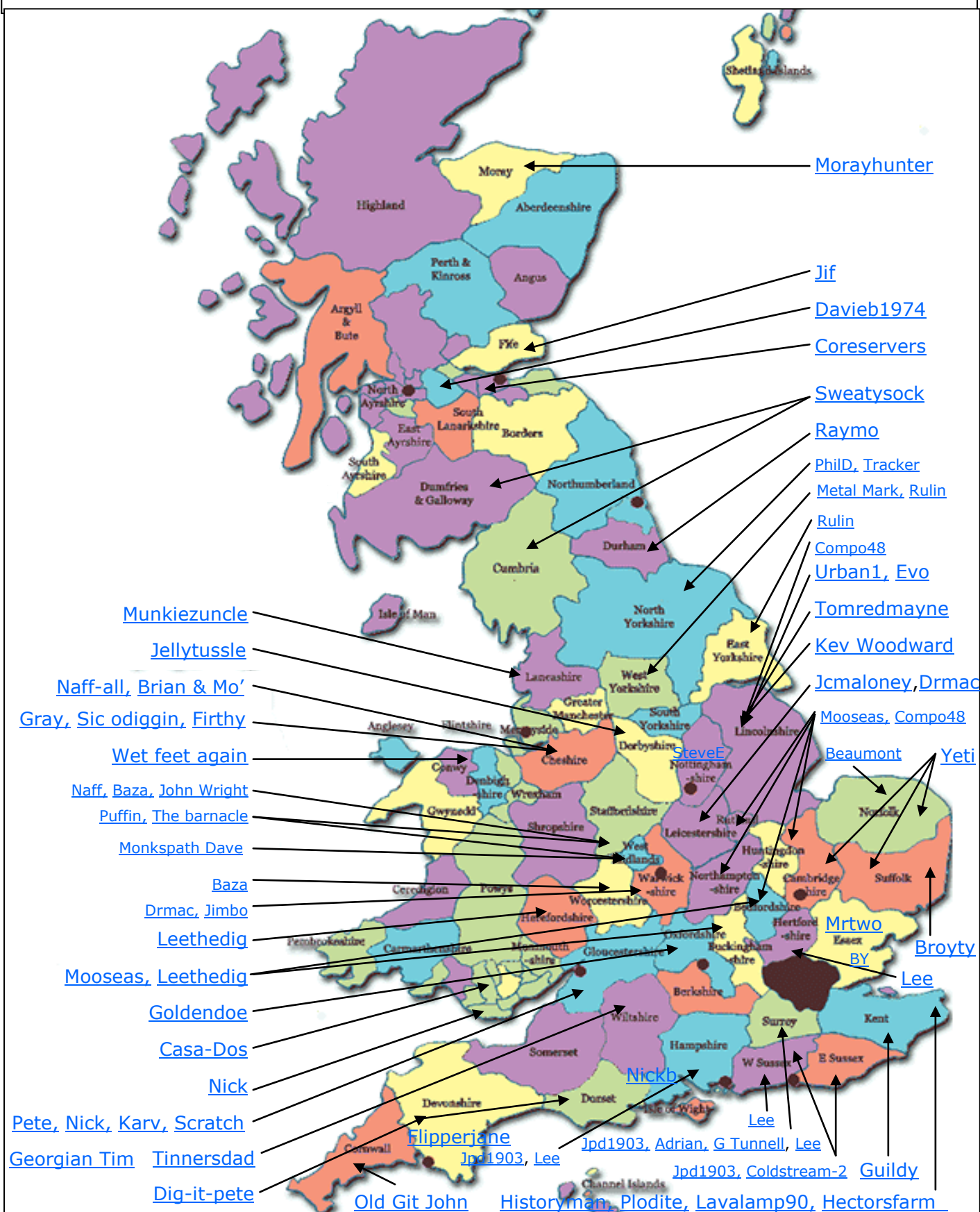
**FINDS LIAISON OFFICERS NEAR YOU**

**HOARDS OF HOARDS AT SALISBURY**



# Community Archaeology Volunteers on Uk Detector Net

Click on the names for more information





## Ways we can help the PAS

PAS funding has been reduced leading to fewer FLO's and so the PAS is looking for better ways to manage their work load as they are working at full capacity;

<https://finds.org.uk/getinvolved/guides/pressures>

They are taking on volunteer recorders;

<https://finds.org.uk/getinvolved/volunteering/role/id/12>

And are promoting self recording;

<https://finds.org.uk/counties/leicestershire/tag/british-museum/>

I would welcome any suggestions on how we can help PAS and the hobby get through this period of austerity.

My thoughts are that we can all help by having information available when recording, the more help we can give the PAS the better I.e. By;

**1.** Have a National Grid Reference of your find spot ready when you see the FLO, this saves getting a map out and finding the NGR. If you can give a 10 figure reference using a GPS it would be much appreciated;

[http://www.amazon.co.uk/s/ref=nb\\_sb\\_noss\\_1/276-8734508-8923167?url=search-alias%3Daps&field-keywords=garmin+etrex&rh=i%3Aaps%2Ck%3Agarmin+etrex](http://www.amazon.co.uk/s/ref=nb_sb_noss_1/276-8734508-8923167?url=search-alias%3Daps&field-keywords=garmin+etrex&rh=i%3Aaps%2Ck%3Agarmin+etrex)

Or download the Grid Reference App to your Android phone (set it for 10 figs); [https://play.google.com/store/apps/details?id=net.blerg&hl=en\\_GB](https://play.google.com/store/apps/details?id=net.blerg&hl=en_GB)

Or use the Grid Reference Finder website;

<http://www.gridreferencefinder.com/>

**2.** If you can fill in the details of your find on a "Finds recording sheet" in advance this will save precious PAS time. Basic info; <http://atoz.forumukdetectornet.co.uk/PAS%20find%20recording%20labels.doc>

More info; <http://atoz.forumukdetectornet.co.uk/PAS%20finds%20recording%20sheet.pdf>

**3.** Better still if you are willing to purchase a set of jewelers scales;

[http://www.amazon.co.uk/s/ref=nb\\_sb\\_ss\\_i\\_4\\_8?url=search-alias%3Daps&field-keywords=jewelers+scales&srefix=jewelers%2Caps%2C188&rh=i%3Aaps%2Ck%3Ajewelers+scales](http://www.amazon.co.uk/s/ref=nb_sb_ss_i_4_8?url=search-alias%3Daps&field-keywords=jewelers+scales&srefix=jewelers%2Caps%2C188&rh=i%3Aaps%2Ck%3Ajewelers+scales)

And a digital caliper;

[http://www.amazon.co.uk/?ie=UTF8&keywords=caliper+measure&tag=googhydr-21&index=aps&hvadid=48450325458&hvpos=1t1&hvexid=&hvnetw=g&hvrandid=5959077009827215455&hvpone=&hvptwo=&hvmmt=b&hvdev=c&ref=pd\\_sl\\_9rw416xiuq\\_b](http://www.amazon.co.uk/?ie=UTF8&keywords=caliper+measure&tag=googhydr-21&index=aps&hvadid=48450325458&hvpos=1t1&hvexid=&hvnetw=g&hvrandid=5959077009827215455&hvpone=&hvptwo=&hvmmt=b&hvdev=c&ref=pd_sl_9rw416xiuq_b)

The weights and dimensions of the finds would be much appreciated saving even more time.

4. Or you can go the whole hog and self record, this requires you to undertake an initial meeting with your FLO to assess your level of ability and then up to 5 training sessions with PAS to ensure you are competent to do this as you would need to take quality images of the finds and ID them accurately as per others on the PAS database and enter them correctly, although not all sessions are necessary if you can demonstrate that you are able to self record to the PAS standard. Your FLO is only an email or phone call away to help and guide you if you are unsure of a particular aspect of self recording.

Volunteers guide to recording objects;

<https://finds.org.uk/volunteerrecording>

Flow of objects;

<https://finds.org.uk/documents/guide.pdf#page=7>

Please feel free to share this information to assist the PAS and strengthen our hobby.

Flickr link for PAS images;

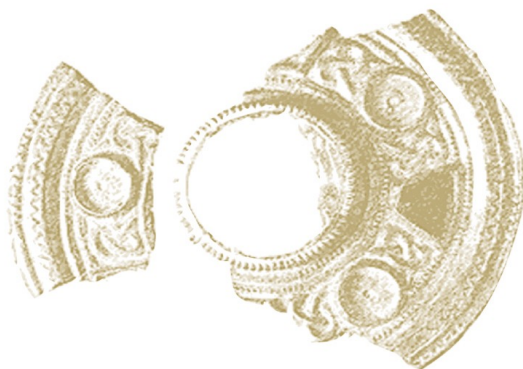
<https://www.flickr.com/photos/finds/albums>

Local Heroes theme song;

<https://www.youtube.com/watch?v=5maW-BTJ2LE>

Find my FLO

<http://rjw57.github.io/findmyflo/>



[Register](#)

[Search the database](#)

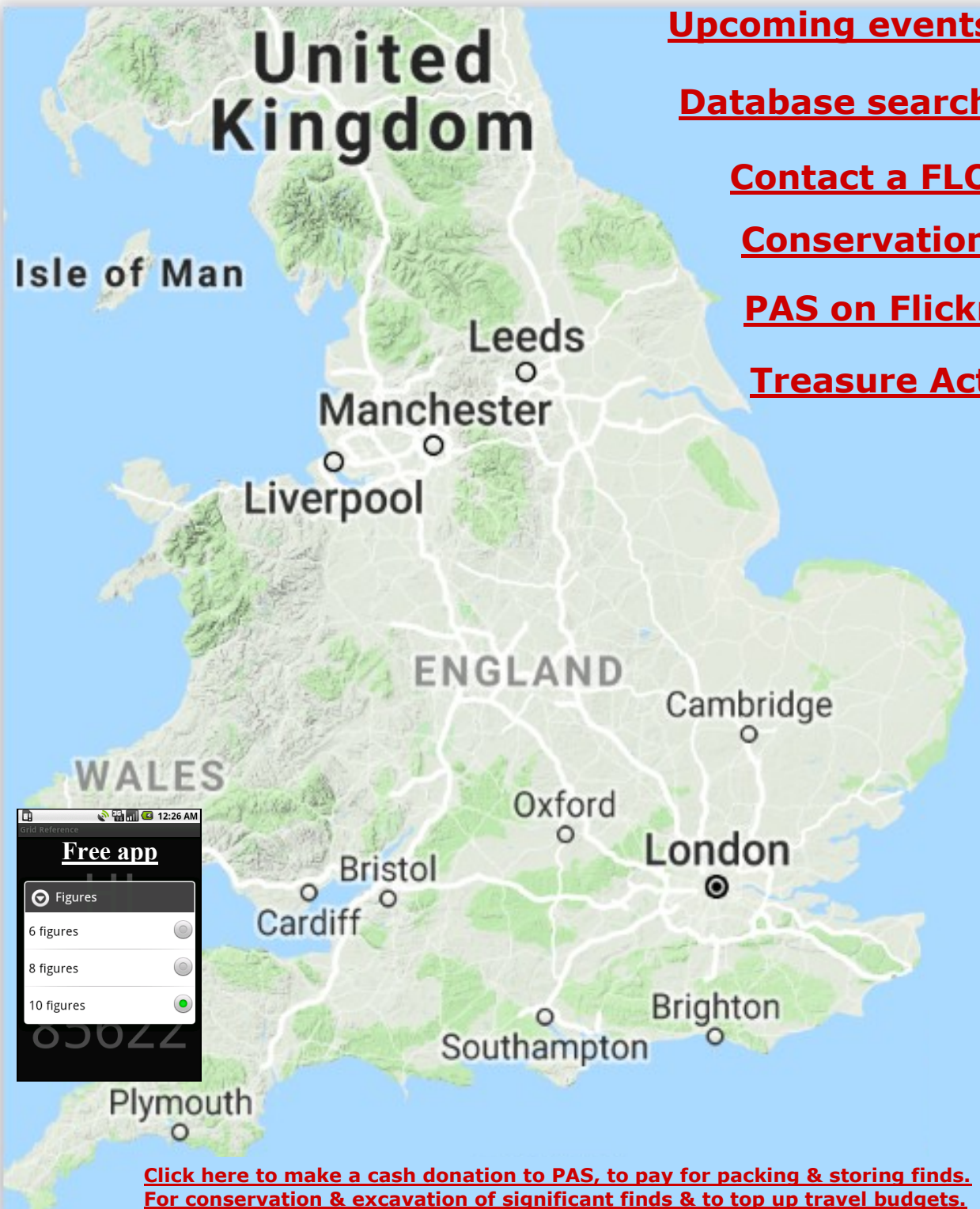
# Portable Antiquities Scheme

[www.finds.org.uk](http://www.finds.org.uk)



# PAS Upcoming Events

## Click on text



The map displays the United Kingdom, including the Isle of Man, England, and Wales. Major cities marked with dots include Leeds, Manchester, Liverpool, Cambridge, Oxford, London, Bristol, Cardiff, Brighton, Southampton, and Plymouth. The regions of England and Wales are also labeled.

[Upcoming events](#)

[Database search](#)

[Contact a FLO](#)

[Conservation](#)

[PAS on Flickr](#)

[Treasure Act](#)

**Free app**

Grid Reference

Figures

6 figures ☐

8 figures ☐

10 figures ☒

Click here to make a cash donation to PAS, to pay for packing & storing finds. For conservation & excavation of significant finds & to top up travel budgets.

# PAS Geographic News

## Click on map





## [PAS on Twitter](#)



**Kurt Adams** @Avon\_GlosPAS · Oct 19

A wonderful Neolithic stone Axe recorded @findsorguk #FindsFriday  
[finds.org.uk/database/artef...](https://finds.org.uk/database/artef...)



9



40

The PAS Database is free to view and record and all find spots are recorded for posterity

<b>Useful Weblinks</b>
<a href="#"><i>PAS - getting involved</i></a>
<a href="#"><i>PAS - Upcoming Events</i></a>
<a href="#"><i>PAS - self recording</i></a>
<a href="#"><i>PAS -Recording Timeline</i></a>
<a href="#"><i>PAS - Advice for finders of archaeological objects including treasure</i></a>
<a href="#"><i>PAS - Conservation advice notes</i></a>
<a href="#"><i>PAS - Guidance to landowners, occupiers &amp; tenant farmers in England &amp; Wales</i></a>
<a href="#"><i>PAS - News from the scheme</i></a>
<a href="#"><i>Grid Reference Android Phone App</i></a>
<a href="#"><i>Responsible detecting code of practice</i></a>
<a href="#"><i>Frome hoard time lapse video of excavation</i></a>
<a href="#"><i>Press coverage of the Frome hoard discovery</i></a>
<a href="#"><i>Burnham hoard excavation</i></a>
<a href="#"><i>Staffordshire hoard excavation</i></a>
<a href="#"><i>Staffordshire hoard at the BM</i></a>
<a href="#"><i>Definition of Treasure</i></a>
<a href="#"><i>To Report Nighthawking - If in progress ring 999, if after the event click here &amp; enter post code, the phone number for your local Police Station is shown on the bottom right hand side</i></a>
<a href="#"><i>Rallies &amp; Events - Searcher Magazine</i></a>
<a href="#"><i>Rallies &amp; Events - Treasure Hunting Magazine</i></a>
<a href="#"><i>Wheresthepath - For O/S &amp; Aerial Maps &amp; National Grid References</i></a>
<a href="#"><i>Uk Grid Reference and Post Code Finder</i></a>
<a href="#"><i>Getting involved in archaeology</i></a>



## New members in October 2018

Brian and Mo and the team would like to thank and extend a warm welcome to all the new members listed below who have joined UKDN in the last month. Please introduce yourselves so that the members can welcome you aboard and make you feel at home. [Click here to introduce yourself](#)

If you are not already registered with UKDN you can register by clicking on this link and see what you are missing [Click here to register](#)

**FloridaSon**

**Cscopeskid**

**Robbie 121**

**Nj62**

**MUD**

**The Useful Idiot**

**willetta48**

**kell12**

**FLYBYE**

**Gilly1**

**clarky**

**CornishBlue**

**DonnaG**

**Defigdug**

**Tonyd-1509**

**Webberkaren**

**adespin**

**Goose408**

**tanya**

**samuel\_stephenson1**

**Kevin W**

**jase1234**

**Jo75**

**Topper55**

**Pete M**

**gpp28**

**Paul Michael**

## Finds Liaison Officers (FLOs) and their work

The Portable Antiquities Scheme (PAS) has been extremely successful, thanks to the contribution of the many metal-detector users and other finders who have volunteered archaeological finds for recording. However, most FLOs are now working at capacity, and therefore unable to record all finds offered for recording. In some areas volunteers and self-recorders are invaluable, but it is nonetheless necessary for FLOs (Finds Liaison Officers) to develop strategies to decide what to record and meet finder's expectations.

The aim of this note is to summarise the guidance offered to FLOs by the PAS Central Unit (British Museum) on how to work under these pressures.

### General

- FLO areas are diverse in their geography, the number of finders and the number of metal-detecting clubs etc, and therefore the PAS needs to adapt to differing local circumstances.
- All FLOs share a job description which is the basis of the funding agreement between the British Museum (which manages the PAS) and the host partners (which employ FLOs).
- Although FLOs work flexible hours they should only work their contracted hours. Therefore they need to balance their time in and out of the office (in order to dedicate enough time to recording finds) by restricting non-office based activities, such as visits to metal-detecting club, finds days etc.
- FLOs receive guidance on PAS policy from the PAS Central Unit via national and regional meetings, and by email. FLOs will normally refer to staff at the Central Unit for guidance on issues such as Stewardship Schemes, nighthawking etc.
- Most FLOs welcome volunteers or self-recorders, but due to practical issues can only take on a certain number at any time. They also must work within the rules set by their local host partners.
- FLOs attend training offered by the British Museum and the PAS Finds Advisers. However, they will refer to other experts about finds offered for recording as necessary. **Unfortunately PAS staff cannot invest time investigating objects that are unlikely to be recorded.**

**Any misuse of social media or any other complaints should be reported to [info@finds.org.uk](mailto:info@finds.org.uk) or PAS, Department of Britain, Europe and Prehistory, British Museum, London, WC1B 3DG. Tel: 0207 323 8611/8618.**

### Finds Recording

- The core role of an FLO is to record archaeological finds to further our understanding of the archaeology of England and Wales. Outreach by FLOs is (normally) only undertaken to encourage the further reporting of finds (see above).
- FLOs record on average at least 1000 records a year and these take time to produce. They include a description of the find, find spot details, weight and dimensions, and a photograph or photographs. The PAS ID for the find allows finders to see it on-line and download a report should they wish to have one.
- FLOs will limit the number of finds they take in for recording, and this might vary from FLO area to FLO area. It is sensible for the FLO and finder to agree a time frame within which finds should be returned. FLOs will usually record finds on a first come first served basis, in order to be fair; occasionally there may be finds that require urgent attention that need to be prioritised.

Because many FLOs are working at capacity they need to be selective in what they record. It is at their discretion whether or not they record a particular find, based on local knowledge and



# PAS Prioritising Recording Guidance

This guidance note is designed to help FLOs prioritise the recording of finds that advance archaeological knowledge.

## General Advice

- It is strongly recommended that FLOs make full use of volunteers and self-recorders.
- Finders should be encouraged to show you all of their finds so that you, not the finder, can exercise discretion whether or not to record a particular find.
- Refer to the PAS guides (e.g. Lithics Recording Protocol) for specific advice.
- Familiarise yourself with the regional and national Research Agendas for your area.
- Keep up to speed with current research projects that use PAS data, especially the sorts of questions researchers are asking of it.
- Develop strong links with your local HER and your local network of heritage professionals, and make use of the Heritage Gateway; these sources of advice may prove important in terms of knowing whether a find or assemblage is important.
- It is good practice to make a note any local recording biases (e.g. only recording crotal bells that have interesting marks, or buttons associated with local militia).

**The final decision to record a find will be based on your local knowledge and experience, supplemented (where necessary) by the advice of colleagues. If in doubt, ask.**

## Recording Priorities

- Priority will be given to finds with good findspots; at least a 6-figure NGR, though ideally greater using GPS. Exceptions may be made in certain circumstances.
- FLOs will selectively record post-medieval objects and coins (i.e. those dating to after 1540). Exceptions can be made for items of social or historical interest.
- Priority will be given to Treasure finds in view of the time constraints stipulated by the Act.
- Priority will be given to new assemblages, such as those which indicate previously unknown sites, and finds which advance knowledge of known 'sites' or landscapes.

**Priority will be given to finds that hold greater potential for advancing knowledge of material culture (e.g. typology, dating, distribution etc.).**

## Priority Checklist (the more ticks an object has the more likely its importance)

- Does this find have at least a 6-figure NGR?
- Is it of national, regional or local importance?
- Does it help identify an area of archaeological potential?
- Does it shed new light on a previously known site?
- Is it an object type that is being researched, or has research potential?
- Is it potential Treasure?

**Is it likely to advance knowledge of material culture (such as typology)?**

## Advice to finders

## A cool way to record your find spot National Grid Refs

Download and install 'Grid Reference' app, a free mobile phone app which can give a 10 figure NGR if you have a Google account;

[https://play.google.com/store/apps/details?id=net.blerg&hl=en\\_GB](https://play.google.com/store/apps/details?id=net.blerg&hl=en_GB)

On the find spot, photo or video your find with your mobile phone and then run the app;

Select 10 figure recording for maximum accuracy

Wait until the maximum number of satellites are acquired for high accuracy

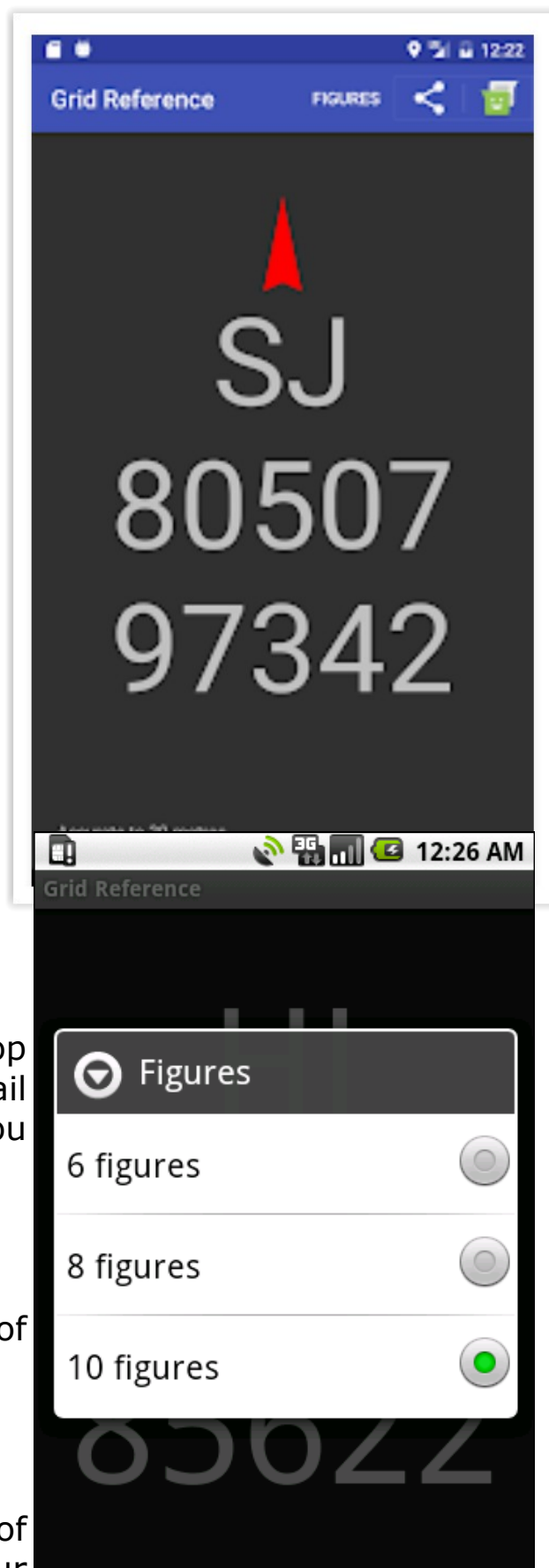
Click on the big letter M at the top of the screen - this lets Google email the grid reference to anyone you want to

Select your email address

Click on the paperclip at the top of the screen

Attach the photo of the find

Click on the red arrow at to top of the screen to send the email to your PC at home or mobile phone





# Finds Recording Sheets

Find Summary ID			
Find Site			
Date Found			
Terrain			
Grid Reference			
Material	Known	Estimated	
Find Identity	Known	Estimated	
Size	Length/mm	Width/mm	Weight/g
Reference Source			
Artifact date	Known	Estimated	
Reference Numbers	PAS	Other	

Find Summary ID			
Find Site			
Date Found			
Terrain			
Grid Reference			
Material	Known	Estimated	
Find Identity	Known	Estimated	
Size	Length/mm	Width/mm	Weight/g
Reference Source			
Artifact date	Known	Estimated	
Reference Numbers	PAS	Other	

Find Summary ID	Find Site	Date Found	Terrain	Grid Reference	Material	Known	Estimated
Find Identity	Size	Reference Source	Artifact date	Reference Numbers	Length/mm	Width/mm	Weight/g

# About us

UK DETECTOR NET was created on September 28th 2002 to bring together responsible metal detectorists everywhere to discuss the hobby, their finds, the machines they use and a million and one other detecting related subjects.

## Visit the forum

[Click here to visit forum](#)

## Contact UKDN

[enquiry@ukdetectornet.co.uk](mailto:enquiry@ukdetectornet.co.uk)

## UKDN magazines to download

[Download magazines here](#)

## View online

[View our Magazines online here](#)

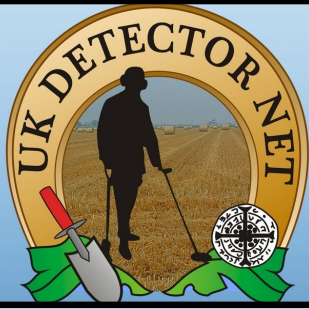
If you would like to contribute to the newsletter please contact either UKDN as above or PhilD via PM,.

## UKDN aims

UKDN is a forum for people who are interested in the hobby of metal detecting. UKDN is an online community where members can exchange and share knowledge, their views, discuss the hobby, their finds, the machines they use and a million and one other detecting related subjects. UKDN actively works towards the following aims:

1. Develop a greater understanding of the hobby and some of the wider issues through healthy pro-active debate within the forum and through the monthly magazine, which is distributed to, and read by, our membership and beyond. The magazine includes UKDN based news and articles, as well as wider news, debate, and issues of heritage interest.
2. Provide a platform to inform beginners in the hobby of the basic principles in the use of a metal detector, gaining permission, site research, basic heritage law, farming scheme rules and in the 'best practice' for conservation, recording and co-operation.
3. Actively promotes the 'Code of Practice for Responsible Metal Detecting' to all members of the UKDN online forum and beyond.
4. Encourage all UKDN detectorists to record their finds with the appropriate bodies (depending where they detect); In England and Wales, this is with the Portable Antiquities Scheme, in Scotland this is the Treasure Trove Unit.
5. UKDN will actively work towards ensuring the future security of the hobby. We will liaise and co-operate with heritage professionals in a way which is mutually beneficial to all parties whilst maintaining our independence, and we encourage their active participation, either in the UKDN online community or through our on-line magazine.





# **Welcome to UKDN**

## **Your Information Pack**

Thank you for joining the UK's most responsible metal detecting forum. We hope it provides you with many hours of enjoyment. This document has been put together to make relevant information about all aspects of the hobby readily available to get you started as quickly as possible whilst adopting the best metal detecting practices.

UKDN (UK DETECTOR NET) was created on September 28th 2002 to bring together responsible metal detectorists everywhere to discuss the hobby, their finds, the machines they use and a million and one other detecting related subjects.

We have a membership list of over 8000 users which is growing daily and UKDN is a very lively forum which, as it's founders **Brian and Mo. Cross** intended, is still FREE to all users.

We run monthly Coin and Find of the Month Competitions which are sponsored by the Treasure Hunting magazine whom we thank for their support. We also run regular free UKDN lottery competitions with detecting related prizes.

### **UKDN Aims**


1. To develop a greater understanding of the hobby and some of the wider issues through healthy pro active debate within the forum and through the monthly Magazine, WORD which is distributed to, and read by, our membership and beyond. WORD Magazine includes UKDN based news and articles, as well as wider news, debate, and issues of heritage interest.
2. To provide a platform to inform beginners in the hobby of the basic principles in the use of a metal detector, gaining permission, site research, basic heritage law, farming scheme rules and in 'best practice' for conservation, recording and co-operation.
3. To actively promote the 'Code of Practice for Responsible Metal Detecting' to all members of the UKDN on-line and beyond.
4. To encourage all UKDN detectorists to record their finds with the appropriate bodies (depending where they detect); In England and Wales, this is with the Portable Antiquities Scheme, in Scotland this is with the Treasure Trove Unit.
5. UKDN will actively work towards ensuring the future security of the hobby. We will liaise and co-operate with heritage professionals in a way which is mutually beneficial to all parties, whilst maintaining our independence, and we encourage their active participation, either in the UKDN on-line community or through our on-line Magazine.

### **Invite a friend to join UKDN**

If you enjoy your visits to UKDN, please consider forwarding this .PDF to a friend inviting him or her to join UKDN, making the forum even bigger and better, by clicking on this link;

**[Join UKDN Here](#)**

**Illegal metal detecting on Scheduled Ancient Monuments, (known as Nighthawking when carried out at night), is smearing the image of our hobby. Should you know of this activity going on, please report it to the local Police, ring 101 or if in progress ring 999.**

<h2>PAS or HER Finds Recording</h2> <p>Essential if you don't want to leave holes in the archaeological record. To record a find with PAS, contact your Finds Liaison Officer (FLO), who can generally be found at your local Museum (see contact list) . FLO's visit metal detecting clubs too which is a good reason to become a club member.</p>	<a href="#">PAS - Get Involved</a> <a href="#">PAS Contact List</a> <a href="#">Regional Map</a> <a href="#">Advice for finders</a>
<h2>PAS Database</h2> <p>The database contains over 400,000 objects recorded since the creation of PAS in 1997, the vast majority recorded by metal detectorists.</p>	<a href="#">Search Database</a> <a href="#">Search Images</a>
<h2>Historic Environment Records (HER)</h2> <p>You can also record your finds with your county Historic Environmental Records (HER). They also have archaeological records for your area including Tithe Maps &amp; details of Scheduled Ancient Monuments (SAM's).</p>	<a href="#">Contact Details</a> <a href="#">Get involved in archaeology</a>
<h2>Coin Identification</h2> <p>There are lots of internet sites that are useful for identifying coins, here are just a small selection.</p>	<a href="#">Milled</a> <a href="#">Hammered</a> <a href="#">Roman</a> <a href="#">Roman Modern</a> <a href="#">Celtic</a> 
<h2>Maps</h2> <p>Essential for recording &amp; plotting your find spots &amp; researching you sites. The Google Earth with combined O/S map can give you a 10 figure NGR (National Grid Reference). With the Google Earth Version 5.0 you can download your find spots &amp; routes taken with a Global Positioning System (GPS). Magic Map can show no go areas such as SAM's &amp; SSSI's &amp; show ELS agreement land. British History &amp; Vision of Britain are historic maps.</p>	<a href="#">Google Earth &amp; OS 10fig NGR</a> <a href="#">Google Earth Pro</a> <a href="#">Google Earth Fly To</a> <a href="#">Bing Map</a> <a href="#">Magic Map</a> <a href="#">ELS/HLS Land &amp; SAM'S</a> <a href="#">British History</a> <a href="#">Vision of Britain</a>
<h2>Treasure Act &amp; Treasure Trove</h2> <p>Care should be taken excavating treasure &amp; consideration given to it being removed by archaeologists so it's provenance can be properly recorded. Do not clean the find, as this could affect the conservation &amp; therefore the valuation. It must be reported within 14 days, take plenty of photo's &amp; get an independent valuation before handing in if possible.</p>	<a href="#">Treasure Act England &amp; Wales</a> <a href="#">Treasure Trove in Scotland</a>
<h2>Treasure Definition</h2>	<a href="#">See page 8 for definition</a>
<h2>Treasure Reports</h2>	<a href="#">2000/1</a> <a href="#">2001/3</a> <a href="#">2003/4</a> <a href="#">2004/5</a> <a href="#">2005/6</a>
<h2>Treasure Valuation Committee (TVC)</h2> <p>The TVC has regular meetings to value treasure items found, based upon past valuations &amp; latest commercial information. Their findings can be contested, by submitting your own valuation.</p>	<a href="#">Valuation Info see page 36</a>
<h2>UK DETECTOR NET Useful Links</h2>	<a href="#">UKDN Magazines</a> <a href="#">UKDN Beginners Section</a> <a href="#">UKDN Glossary</a>



## Detector Manuals

[Bounty Hunter](#)  
[C Scope](#)  
[Fisher](#)  
[Garrett](#)  
[Minelab](#)  
[Tesoro](#)  
[Viking](#)  
[Whites](#)  
[XP](#)  
[Makro](#)  
[Teknetics](#)

## Magazines

[UKDN WORD Magazine](#)  
[Searcher](#)  
[Treasure Hunting](#)

## Joining a Club

[List of Clubs](#)

## Insurance

Highly Recommended, essential for Club members, inexpensive.

[NCMD](#)  
[FID](#)

### Detecting - Permission must be obtained

Detecting permission is required for all land, it is generally easiest to get on beaches, some areas are owned by the Crown Estate (terms & conditions apply) & some by local Councils who tend to prohibit it, but still try.

Permission on farm land means knocking on farm doors or writing to Landowners to ask permission to search the land (best obtained in writing in case of any later dispute should something of high value be found).

On Entry Level Stewardship (ELS) land you must strictly follow the Responsible Detecting Code of Practice in England & Wales (see below) so Landowners do not compromise the terms of their agreement.

Parks too are generally down to the Local Council who may be worth asking if you can convince them you will cause the minimum of disturbance to the grass, will remove litter, needles, glass etc , leaving it better than it was.

**\*Detecting is prohibited or special permission must be obtained, these sites are generally shown on the Magic Map, ask your FLO or HER (see over).**

[Beaches - Crown Estate](#)  
[Farm Ownership](#)  
[Farm Register](#)  
[Farm ELS Rules](#)  
[Parks \(email Council\)](#)  
[Public rights of way](#)  
  
[ELS/HLS Land, Battlefields & SAM's, SSSI's in England Map\\*](#)  
[Nature Reserves Map\\*](#)  
[SAM's in Wales Map\\*](#)  
[SAM's in Scotland Map\\*](#)  
[Thames foreshore Rallies](#)

## Codes of Practice

Please respect the Countryside Code. The Responsible Detecting Code of Practice is regarded best practice by those concerned about our heritage.

[Countryside Code](#)  
[Responsible Detecting - Code of Practice](#)

### Portable Antiquities Scheme (PAS) Finds Recording

The PAS is a voluntary scheme to record archaeological objects found by the public in England & Wales. If recorded these finds have the potential to tell us much about the past, such as how & where people lived & about the types of objects they made & used. A recording accuracy of 6 figs min is preferred. Contact your local Finds Liaison Officer to record (see over).

**Treasure our past & record it with PAS**

[Recording via GPS](#)  
[Purchase a GPS](#)  
[GPS App for Mobile Phones](#)  
[Recording via O/S](#)  
[Bagging, Storing & Conserving finds](#)

# Some Benefits of Metal Detecting

## **For the Nation**

Increasing;  
Britains international, county & village status with some awesome finds  
Tourism & Museum Visits  
Our knowledge of the past

## **For the Archaeologists**

Assisting;  
With Community Archaeology Digs  
With Battlefield & Time Team Surveys  
With pre construction surveys  
Some of above free of charge  
  
Locating;  
New archaeological sites  
  
Providing;  
Data for research & degree projects via the Portable Antiquities  
Scheme Database  
  
Recording;  
Everyday finds & Treasure finds  
  
Reporting;  
Incidents of Nighthawking  
  
Rescuing;  
Coins & artifacts from the effects of farming equipment & chemicals

## **For the Public**

Contributing;  
To our heritage by recording finds  
  
Creating;  
Employment for hobby manufacturers & dealers  
  
Educating;  
By giving talks & showing finds  
  
Raising;  
Money for charities  
  
Recovering;  
Lost rings, keys etc free of charge  
  
Removing;  
Litter, sharp metal & glass from beaches & recreation grounds  
  
Reporting;  
Bird rings

## **For the Landowners**

Deterring;  
Trespassers, thieves & crows

Fly tipping  
Vandalism  
Hare coursing

Locating:  
Lost farming equipment, underground cables & pipes  
Metal objects swallowed by livestock

Payment;  
To landowner or charity as required

Possibility; Of finds of significant value or Treasure

Removing;  
Large pieces of iron that might damage machinery  
Lead & green waste  
Objects detrimental to the health of livestock

Reporting;  
Trespassers & explosives  
Problems with the land  
Injuries to livestock  
Any human remains found

Revealing; The History of the land

### **For the Detectorists**

Adventure  
Being in the countryside  
Closeness with nature  
Companionship  
Escapism to a whole new world via the headphones  
The thrill of the chase  
Feeling of making lots of new friends with fellow detectorists, farmers, archaeologists & UKDN forum members  
Freedom of the great outdoors  
Fresh Air  
Healthy exercise  
Joy in showing finds to each other  
Learning about finds, history & archaeology  
Pleasure in contributing by recording  
Possibility of finds of county or national importance  
Possibility of finds of significant value or Treasure  
Relaxation  
Seeing new places  
Sharing experiences, pictures of finds, wildlife and scenery on the UKDN forum  
Solitude should you just want to get away from everything & everyone  
Stress relief  
The look on the faces of the owners of lost items when returned  
The thrill of discovery  
Winning of Club Awards



# Landowner & Detectorist Search Agreement

I am seeking permission to search your land in compliance with the terms & conditions of your [Environmental Stewardship Scheme](#), [The Code of Practice for Responsible Metal Detecting](#) & [Guidance for Land Owners, Occupiers & Tenant Farmers in England & Wales](#) agreed with

## Finds may fall into several categories

### Rubbish

Most farmland is contaminated with lead and iron rubbish, some of which can damage farm equipment. This will be removed and the location of any large underground metalwork pointed out to you.

### Portable Antiquities

Finds over 300 years old that are not [Treasure](#) will be recovered in a proper manner and reported to the [Portable Antiquities Scheme \(PAS\)](#) for recording on the [National Database](#) along with their find spots in accordance with the [agreed code of practice](#). Finds of significant value (£ agreed with your self) can be sold and the proceeds shared 50/50 should you wish [ ]. Finds of lesser value I the finder shall own and [conserve](#) [ ].

### Treasure

Finds will be recovered in a proper manner. All finds of potential treasure are the property of the Crown and must be reported to the Coroner within 14 days of discovery.

The Coroner will decide whether the finds fall within the definition of Treasure as contained in the [Treasure Act 1996](#).

It will then be for the [Treasure Valuation Committee](#) to assess it's potential value and the disbursement of any reward.

If no museum has expressed an interest, the find

You will be kept informed of ALL finds made on your land by means of photographs via regular emails and details of all finds recorded by the PAS.

When all detecting is completed you will receive a memory stick containing records in chronological order of all



Agreed by the Landowner .....

Address .....

Agreed by the Detectorist .....

Address .....



Click on the images for more info



# Code of Practice for Responsible Metal Detecting in England and Wales



**The Treasure Act**  
Information for Finders of Treasure  
(England & Wales)



Guidance for landowners, occupiers and tenant farmers in England and Wales

Metal-detecting, Field-walking and Searching for Archaeological Objects: guidance for landowners, occupiers and tenant farmers in England and Wales

This guidance had been jointly produced by the Country, Land & Business Association, the National Farmers Union and the Portable Antiquities Scheme, September 2010.

## Best Practice

### Conservation Advice Notes



UKDN Detecting Guide - by PhilD			
What do I need	Where can or can't I detect	What might I find	What should I do when I find something
<b>Equipment</b>	<b>Farm land permission req'd</b>	<b>Modern finds under 300 yrs old</b> Lead, tin, copper alloy, silver & gold	<b>Recording find spots with an O/S map or GPS or online map</b>
<b>Permission from the landowner</b>	<b>Beaches Permit req'd for Crown Estates</b>	<b>Recordable finds over 300 years old</b> Lead, tin, copper alloy, silver & gold	<b>Recording with PAS</b> Recording Treasure Trove
<b>Club Membership can provide land</b>	<b>Mudlarking Permit req'd</b>	<b>Treasure finds Inform Bally, Oranmore &amp; FLO</b>	<b>What recording can tell us</b>
<b>Consider NCMD or FLO membership &amp; insurance</b>	<b>Local parks &amp; Council land permission req'd</b>	<b>Saxon Burials &amp; Church Burials</b> Stop digging & report to PAS FLO	<b>Archaeological objects including treasure</b>
<b>Comply with the Responsible Detecting code of practice</b>	<b>Avoid SAM's &amp; SSSI's in England, Wales &amp; Scotland</b>	<b>Green Waste never allows take care</b>	<b>Bagging, cleaning &amp; conserving finds</b>
<b>Understanding of the Treasure Act or Treasure Trove (Scotland)</b>	<b>Avoid National Trust land and Nature Reserves</b>	<b>Diseases wear gloves take care</b>	<b>Please consider donating your finds to a Museum</b>
<b>Understanding of how recovery</b>	<b>Avoid battlefields to retain their battle history</b>	<b>Ordnance - stop digging call Police</b> Lots of Muckel Balls tell the FLO	<b>Getting involved in archaeology</b>
<b>PAS Guide for landowners &amp; farmers &amp; RFLV Guidance Note</b>	<b>Avoid footpaths</b>	<b>Join UKDN &amp; our Finders Advisers will ID your finds &amp; save you a PAS valuable time</b>	<b>PAS Frequently asked Questions</b>

